

Архангельск (8182)63-90-72
Астана (7172)727-132
Астрахань (8512)99-46-04
Барнаул (3852)73-04-60
Белгород (4722)40-23-64
Брянск (4832)59-03-52
Владивосток (423)249-28-31
Волгоград (844)278-03-48
Вологда (8172)26-41-59
Воронеж (473)204-51-73
Екатеринбург (343)384-55-89

Иваново (4932)77-34-06
Ижевск (3412)26-03-58
Иркутск (395)279-98-46
Казань (843)206-01-48
Калининград (4012)72-03-81
Калуга (4842)92-23-67
Кемерово (3842)65-04-62
Киров (8332)68-02-04
Краснодар (861)203-40-90
Красноярск (391)204-63-61
Курск (4712)77-13-04
Липецк (4742)52-20-81

Киргизия (996)312-96-26-47

Магнитогорск (3519)55-03-13
Москва (495)268-04-70
Мурманск (8152)59-64-93
Набережные Челны (8552)20-53-41
Нижегород (831)429-08-12
Новокузнецк (3843)20-46-81
Новосибирск (383)227-86-73
Омск (3812)21-46-40
Орел (4862)44-53-42
Оренбург (3532)37-68-04
Пенза (8412)22-31-16

Казахстан (772)734-952-31

Пермь (342)205-81-47
Ростов-на-Дону (863)308-18-15
Рязань (4912)46-61-64
Самара (846)206-03-16
Санкт-Петербург (812)309-46-40
Саратов (845)249-38-78
Севастополь (8692)22-31-93
Симферополь (3652)67-13-56
Смоленск (4812)29-41-54
Сочи (862)225-72-31
Ставрополь (8652)20-65-13

Таджикистан (992)427-82-92-69

Сургут (3462)77-98-35
Тверь (4822)63-31-35
Томск (3822)98-41-53
Тула (4872)74-02-29
Тюмень (3452)66-21-18
Ульяновск (8422)24-23-59
Уфа (347)229-48-12
Хабаровск (4212)92-98-04
Челябинск (351)202-03-61
Череповец (8202)49-02-64
Ярославль (4852)69-52-93

<http://sunflower.nt-rt.ru> || srw@nt-rt.ru

ЗАПЧАСТИ НА ДИСКОВЫЕ БОРОНЫ SUNFLOWER-1434, SUNFLOWER-1435, SUNFLOWER-1544

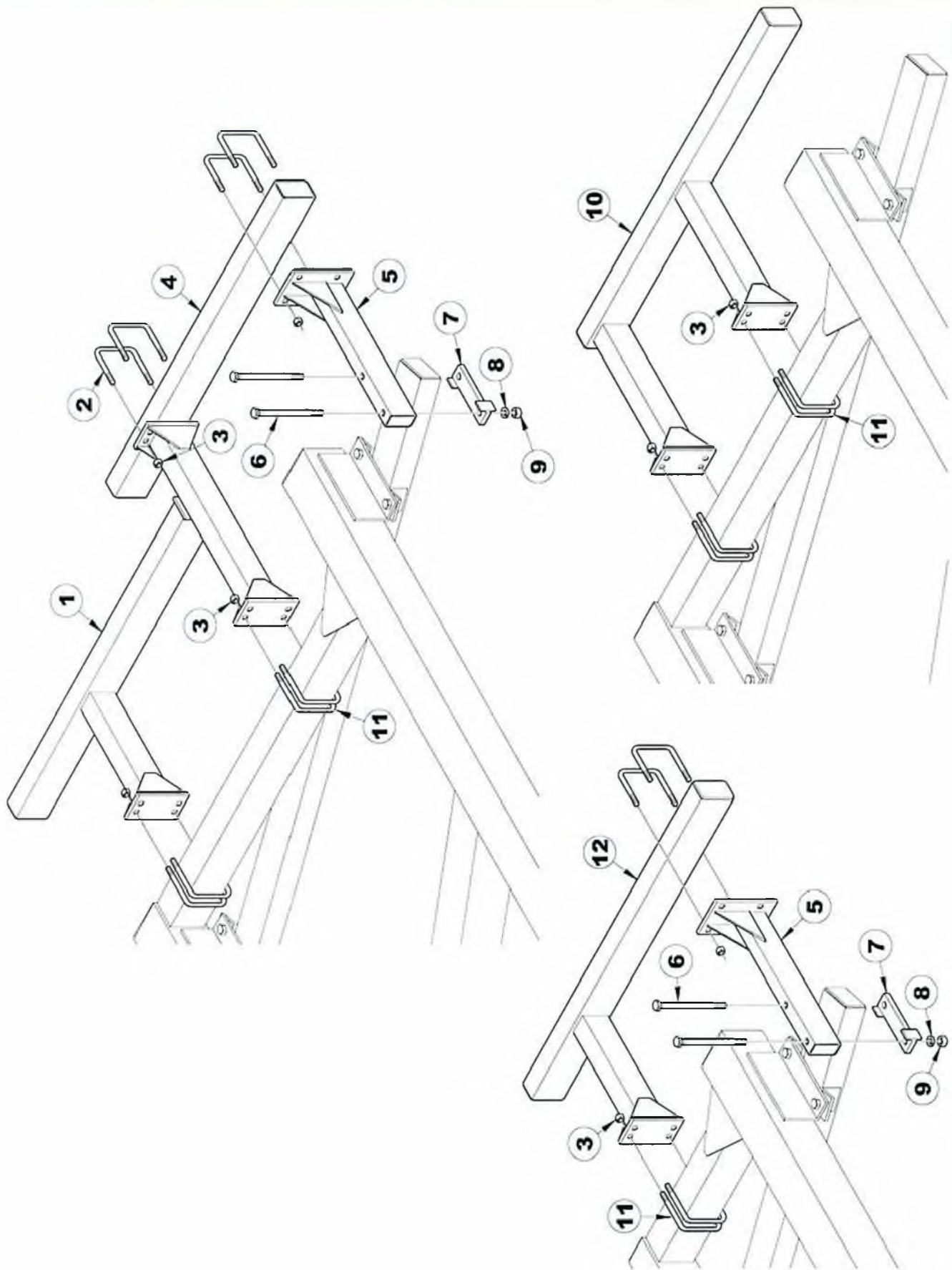
ОПИСАНИЕ

Center Attachment Subframe Assembly

Item Number Part Number Description

1	6283R	ATTACHMENT SUBFRAME, 111 1/2" (30', 33' & 36')
2	669-1	LOCK NUT, 5/8" HEX NYLON INSERT, GR 5, Z/P
3	6102	U-BOLT, 5/8"-11 X 5 1/2" X 5 11/16" W, GR 5, Z/P
4	6185R	ATTACHMENT SUBFRAME, 67 1/2" CENTER (21', 23', 26' & 29')

Wing Attachment Subframe Assembly

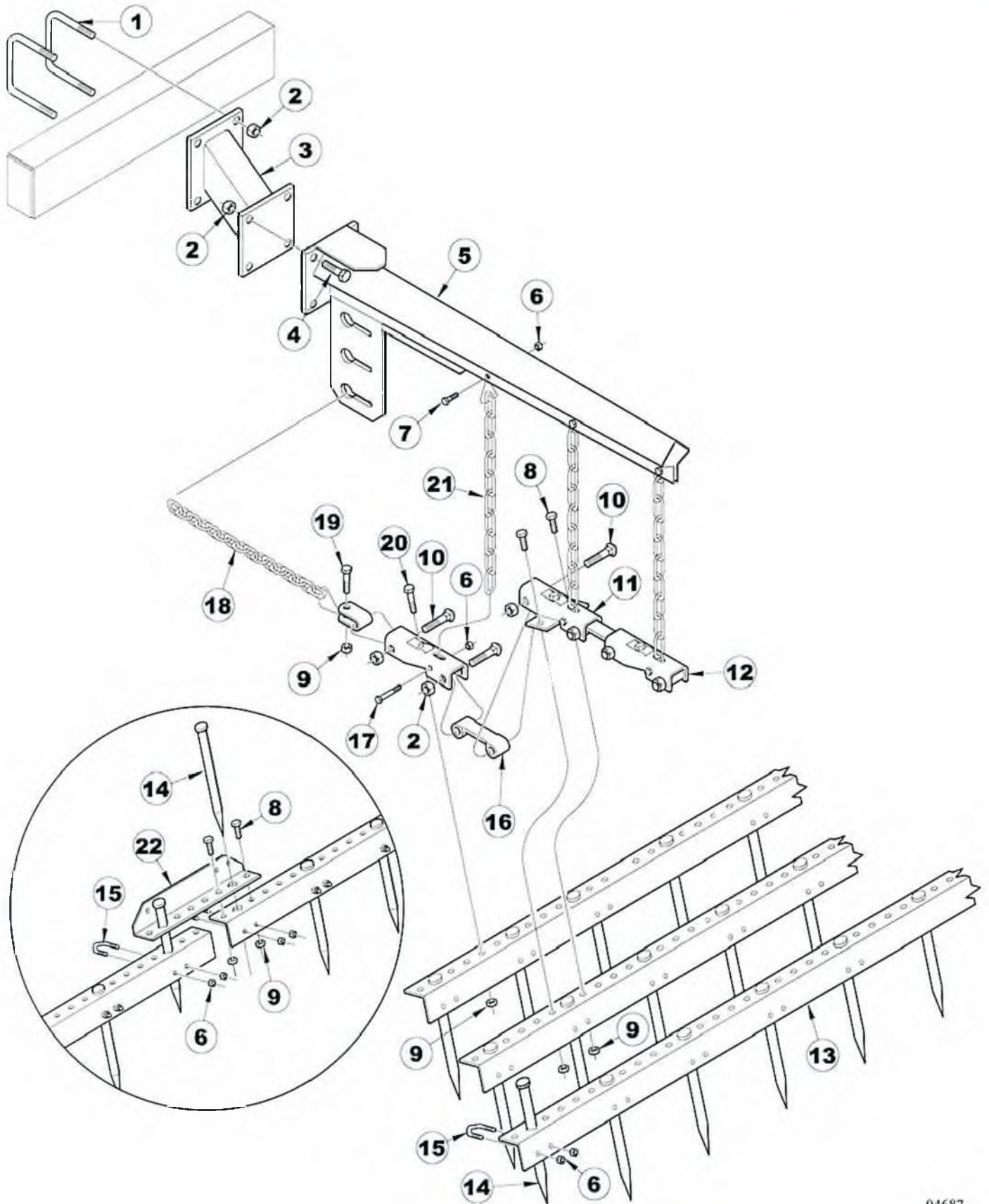


Wing Attachment Subframe Assembly

Item Number Part Number Description

1	6284R	ATTACHMENT SUBFRAME, 54 1/8" (36')
2	2815	U-BOLT, 5/8"-11 X 4 1/2" X 5 11/16" W, GR 5, Z/P
3	669-1	LOCK NUT, 5/8" HEX NYLON INSERT, GR 5, Z/P
4	6285R	TOOL BAR, 50" (36')
5	6183R	ATTACHMENT SUBFRAME, 22 1/2" (21', 23' & 36')
6	1951	HEX BOLT, 3/4"-10 X 9 1/2", GR 5, Z/P
7	6189R	CLAMP PLATE
8	1040	LOCK WASHER, 3/4" SPLIT TYPE MED, Z/P
9	106	HEX NUT, 3/4"-10 FULL, GR 5, Z/P
10	6187R	ATTACHMENT SUBFRAME, 54 1/2" (26' & 30' SHOWN)
	6188R	ATTACHMENT SUBFRAME, 67 1/2" (29' & 33')
11	6102	U-BOLT, 5/8"-11 X 5 1/2" X 5 11/16" W, GR 5, Z/P
12	6186R	ATTACHMENT SUBFRAME, 50 1/2" (21' & 23')

Sunflower Manufacturing
3-Row Spike Drag Assembly

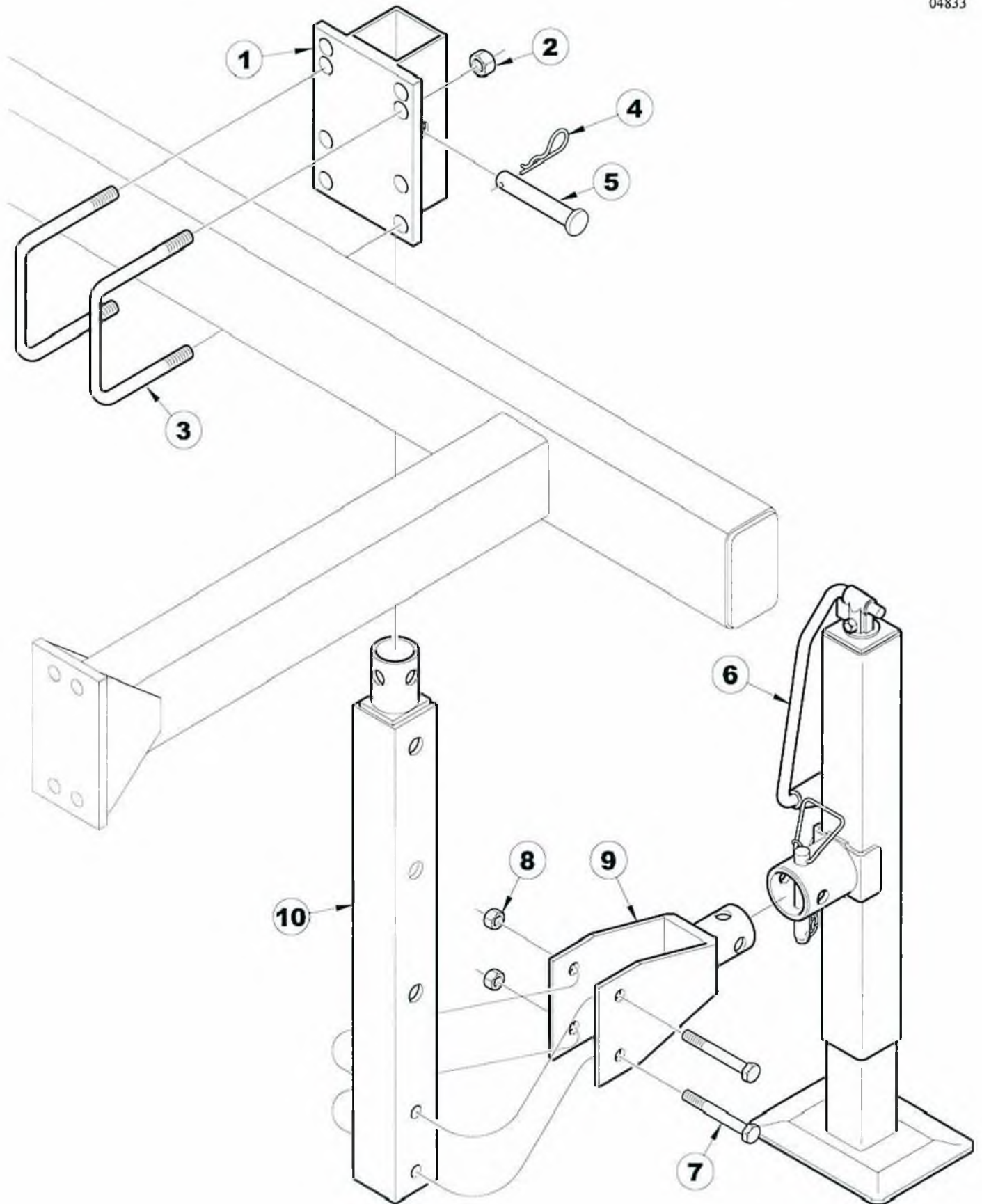


3-Row Spike Drag Assembly

<i>Item Number</i>	<i>Part Number</i>	<i>Description</i>
1	2815	U-BOLT, 5/8"-11 X 4 1/2" X 5 11/16" W, GR 5, Z/P
2	669-1	LOCK NUT, 5/8" HEX NYLON INSERT, GR 5, Z/P
3	6334R	EXTENSION, SPIKE DRAG
4	670	HEX BOLT, 5/8"-11 X 2", GR 5, Z/P
5	3974	SPIKE TOOTH ARM, 3-ROW
6	3567	LOCK NUT, 3/8"-16 HEX NYLON INSERT, GR 2, Z/P
7	3984	HEX BOLT, 3/8"-16 X 1 1/4", GR 5, Z/P
8	1823	HEX BOLT, 1/2"-13 X 1 1/4", GR 5, Z/P
9	2096	LOCK NUT, 1/2"-13 HEX NYLON INSERT, GR 8, Z/P
10	3985	CARRIAGE BOLT, 5/8"-11 X 3" GR 5, Z/P SPECIAL
11	3979	DOUBLE BAR BRACKET
12	3977	BAR BRACKET
13	3966	SPIKE TOOTH BAR, 3 1/2' (5 TOOTH)
	3967	SPIKE TOOTH BAR, 5' (7 TOOTH)
	3968	SPIKE TOOTH BAR, 6 1/2' (9 TOOTH)
	3969	SPIKE TOOTH BAR, 8' (11 TOOTH)
	3970	SPIKE TOOTH BAR, 9 1/2', (13 TOOTH)
	5954B	SPIKE TOOTH BAR, 8 3/4' (12 TOOTH)
	5955B	SPIKE TOOTH BAR, 10 1/4' (14 TOOTH)
14	3895	SPIKE TOOTH, 3/4" X 11"
15	3894	TRI-BEND BOLT, 3/8"-16 X 1 1/2", Z/P
16	3976	LINK, OFFSET
17	4738	HEX BOLT, 3/8"-16 X 2 3/4", GR 5, Z/P
18	3983	CHAIN, 5/16" PROOF, 25 LINKS
19	2045	HEX BOLT, 1/2"-13 X 1 3/4", GR5, Z/P
20	112	HEX BOLT, 1/2"-13 X 2 1/2", GR 5, Z/P
21	5531	CHAIN, 7/0 SIDE 12 LINKS
22	3964	SPIKE TOOTH EXTENSION, 18" (2 TOOTH)
23	7013B	U-CLIP

Sunflower Manufacturing
Rear Jack Assembly

04833



Rear Jack Assembly

Item Number Part Number Description

1	3353	JACK ADAPTER PLATE
2	669-1	LOCK NUT, 5/8" HEX NYLON INSERT, GR 5, Z/P
3	2815	U-BOLT, 5/8"-11 X 4 1/2" X 5 11/16" W, GR 5, Z/P
4	2867	PIN CLIP, 1/2"-5/8" SHAFT, .120" DIA, 2" L
5	2094	PIN, 3/4" X 4 1/2" (4"), Z/P
6	9777	LONG TONGUE JACK, SQ W/TUBE MOUNT
7	3371	HEX BOLT, 1/2"-13 X 4", GR 5, Z/P
8	2096	LOCK NUT, 1/2"-13 HEX NYLON INSERT, GR 8, Z/P
9	3355R	JACK BRACKET
10	3354R	JACK TUBE
	3352	REAR JACK MOUNT ASSEMBLY, LESS U-BOLTS & JACK

Numerical Part Number Index

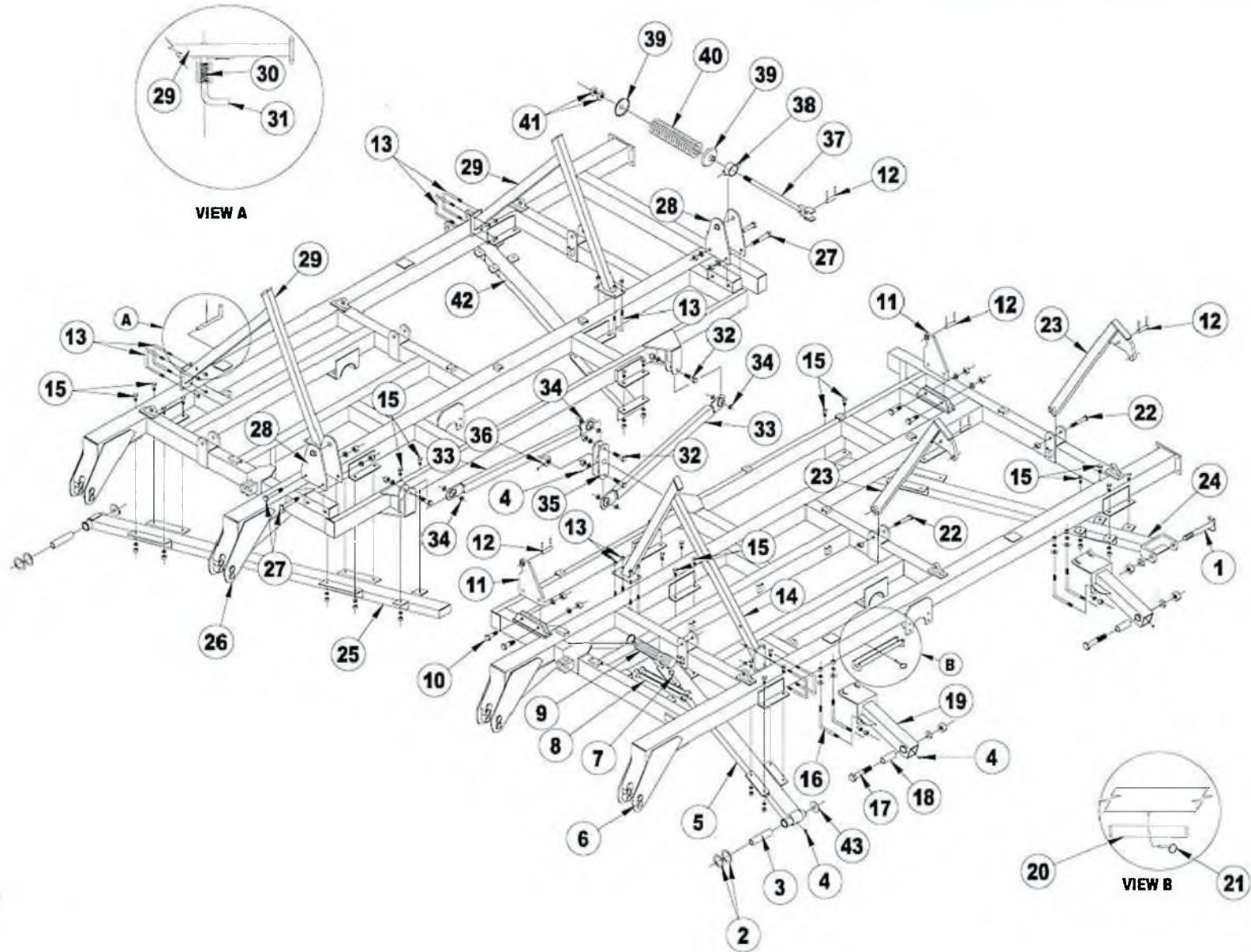
<i>PART NO.</i>	<i>PAGE</i>	<i>PART NO.</i>	<i>PAGE</i>	<i>PART NO.</i>	<i>PAGE</i>
1040	16,40	3983	42		
106	16,40	3984	42		
112	42	3985	42		
140	18	4738	18,20,42		
1507	20	5531	42		
156	18	5715	18,20		
175	18,20	5721R	18		
178	18,20	5722	20		
1823	42	5723R	18,20		
1951	16,40	5724R	18,20		
2045	42	5725R	18		
2094	22,44	5726R	18		
2096	18,20,22,42,44	5727R	20		
2097	18,20	5728R	18		
2557	18	5729R	18,20		
2815	16,22,40,42,44	5730	18,20		
2867	22,44	5731	20		
3065	20	5732R	18,20		
317	18,20	5733	18		
3352	22,44	5746R	20		
3353	22,44	5889R	18		
3354R	22,44	5890R	20		
3355R	22,44	5954B	42		
3371	18,20,22,44	5955B	42		
3557	18,20	6102	14,16,38,40		
3566	18,20	6175R	18		
3567	18,20,42	6183R	16,40		
3609	18,20	6185R	14,38		
3610	20	6186R	16,40		
3611	20	6187R	16,40		
3612	20	6188R	16,40		
3621	18,20	6189R	16,40		
3628	18	6283R	14,38		
3629	20	6284R	16,40		
3635	20	6285R	16,40		
3859	20	6334R	42		
3894	42	669-1	14,16,18,20,22,38,40, 42,44		
3895	42	670	42		
3917	18	7013B	42		
3962	18,20	7018R	18		
3964	42	7907R	18,20		
3966	42	7908R	18,20		
3967	42	9777	22,44		
3968	42	H			
3969	42	HEN	18,20		
3970	42				
3974	42				
3976	42				
3977	42				
3979	42				

TABLE OF CONTENTS

PARTS SECTION

CENTER FRAME ASSEMBLY	P1 - P3
REAR STABILIZER ASSEMBLY	P4 - P5
TONGUE ASSEMBLY	P6 - P9
WING FRAME ASSEMBLY	P10 -P11
TANDEM LIFT AXLE ASSEMBLY	P12 -P13
EIGHT BOLT HUB ASSEMBLY.	P14 -P15
GAUGE WHEEL ASSEMBLY.	P16 -P17
RIGID SCRAPER ASSEMBLY - C-FLEX MOUNTED	P18 -P21
RIGID SCRAPER ASSEMBLY	P22 -P23
DISC GANG ASSEMBLY	P24 -P25
TRUNNION BEARING REPLACEMENT PARTS.	P26 -P27
STANDARD SELF LEVELER ASSEMBLY	P28 -P30
HYDRAULIC SELF LEVELER ASSEMBLY (OPTIONAL)	P31
HYDRAULICS FOR HYDRAULIC SELF LEVELER	P32-P34
SAFETY AND IDENTIFICATION DECALS	P35 -P37
HYDRAULIC LIFT SYSTEM	P38 -P39
HYDRAULIC FOLD SYSTEM.	P40 -P41

P1



01210

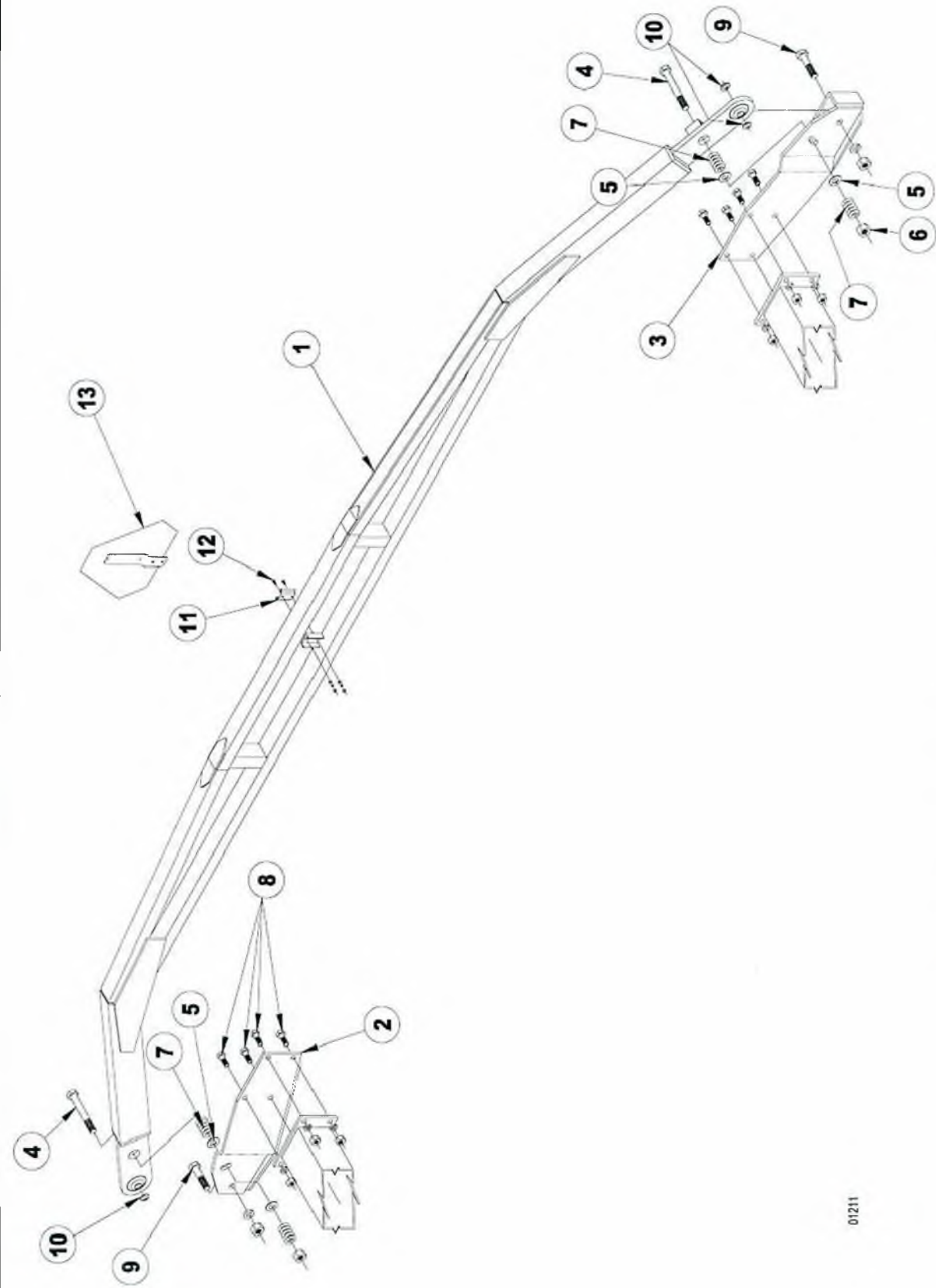
CENTER FRAME ASSEMBLY

CENTER FRAME ASSEMBLY

ITEM	PART NO.	DESCRIPTION
1	6169B	1 1/2" x 11 1/2" HINGE BOLT
	2085	1 1/2" LOCK WASHER
	2079	1 1/2" JAM NUT
2	6286	MACHINE BUSHING, 2 1/8" I.D. x 3 1/8" O.D., 10 GA.
3	6046	HINGE BUSHING, 8 3/8"
4	2098-1	GREASE ZERK, 1/8" NPTF, 5/8" L.
5	6886B	42' & 45' LEFT CENTER FRONT GANG BAR
6	6863R	LEFT CENTER FRAME
7	6575	3/8" x 3 1/2" BALL LOCK PIN
8	6923R	TONGUE ADJUSTMENT WRENCH
9	3750	OPERATOR'S MANUAL TUBE
	3765	HOSE CLAMP, 3 1/2"
10	FK150074	1" x 3" HEX BOLT
	1283	1" LOCK WASHER
	110	1" HEX NUT
11	6903R	CENTER LOCK CYLINDER MOUNT
12	5339	1" x 4 1/16" PIN
	3164	5/16" x 2" ROLL PIN
13	6913	5/8" x 7 1/2" x 6 5/8" W. U-BOLT
	669-1	5/8" LOCK NUT
14	6931R	LEFT WING STABILIZER
15	6305	3/4" x 2" HEX BOLT, GR. 8
	1040	3/4" LOCK WASHER
	106	3/4" HEX NUT
16	6912	3/4" x 7 3/4" x 7 3/4" L-BOLT
	893	3/4" FLAT WASHER
	1040	3/4" LOCK WASHER
	106	3/4" HEX NUT
17	1767	1 1/2" x 7 1/2" HEX BOLT
	2085	1 1/2" LOCK WASHER
	2079	1 1/2" JAM NUT
18	6911	CLAMP BUSHING, 2" O.D. x 1.532" I.D., 4 15/16" L.
19	6910R	BOLT ON HINGE - CENTER FRAME
20	6925R	TRANSPORT LOCK (For 4436 & 7014R Ver.1 Cylinders)
	9685R	TRANSPORT LOCK (For 9551R & 9552R Ver.2 Cylinders)
21	5201	3/8" x 3" BALL LOCK PIN
22	1282	1" x 6 1/2" HEX BOLT
	3938	1" LOCK NUT
23	6896R	CYLINDER FOLD ARM
24	6888B	42' & 45' LEFT CENTER REAR GANG BAR
25	6885B	42' & 45' RIGHT CENTER FRONT GANG BAR

CENTER FRAME ASSEMBLY

ITEM	PART NO.	DESCRIPTION
26	6862R	RIGHT CENTER FRAME
27	1282	1" x 6 1/2" HEX BOLT
	1283	1" LOCK WASHER
	110	1" HEX NUT
28	6904R	CENTER LOCK TRUNNION MOUNT
29	6897R	RIGHT WING STABILIZER
30	6932	SPRING, 1.46" O.D. x 1.236" I.D., 3" L.
31	6900R	1" x 10 1/32" SPECIAL PIN
	3164	5/16" x 2" ROLL PIN
32	1753	1" x 4" HEX BOLT
	1283	1" LOCK WASHER
	110	1" HEX NUT
33	2109	STABILIZER LINKAGE
34	2073	MACHINE BUSHING, 1 1/2" O.D. x 1" I.D.
35	6926R	LINKAGE ROCKER BRACKET
36	2088-1	1 3/4" JAM NUT W/SET SCREW
37	6905R	CENTER LOCK SPRING ROD
38	6907R	CENTER LOCK TRUNNION
39	6906R	CENTER LOCK SPRING WASHER
40	1875	COMPRESSION SPRING, 2.938" O.D. x 1.625" I.D., 8 7/8" L.
41	4737	1 1/4" JAM NUT
42	6887B	42' & 45' RIGHT CENTER REAR GANG BAR
43	3095	1 1/2" FLAT WASHER

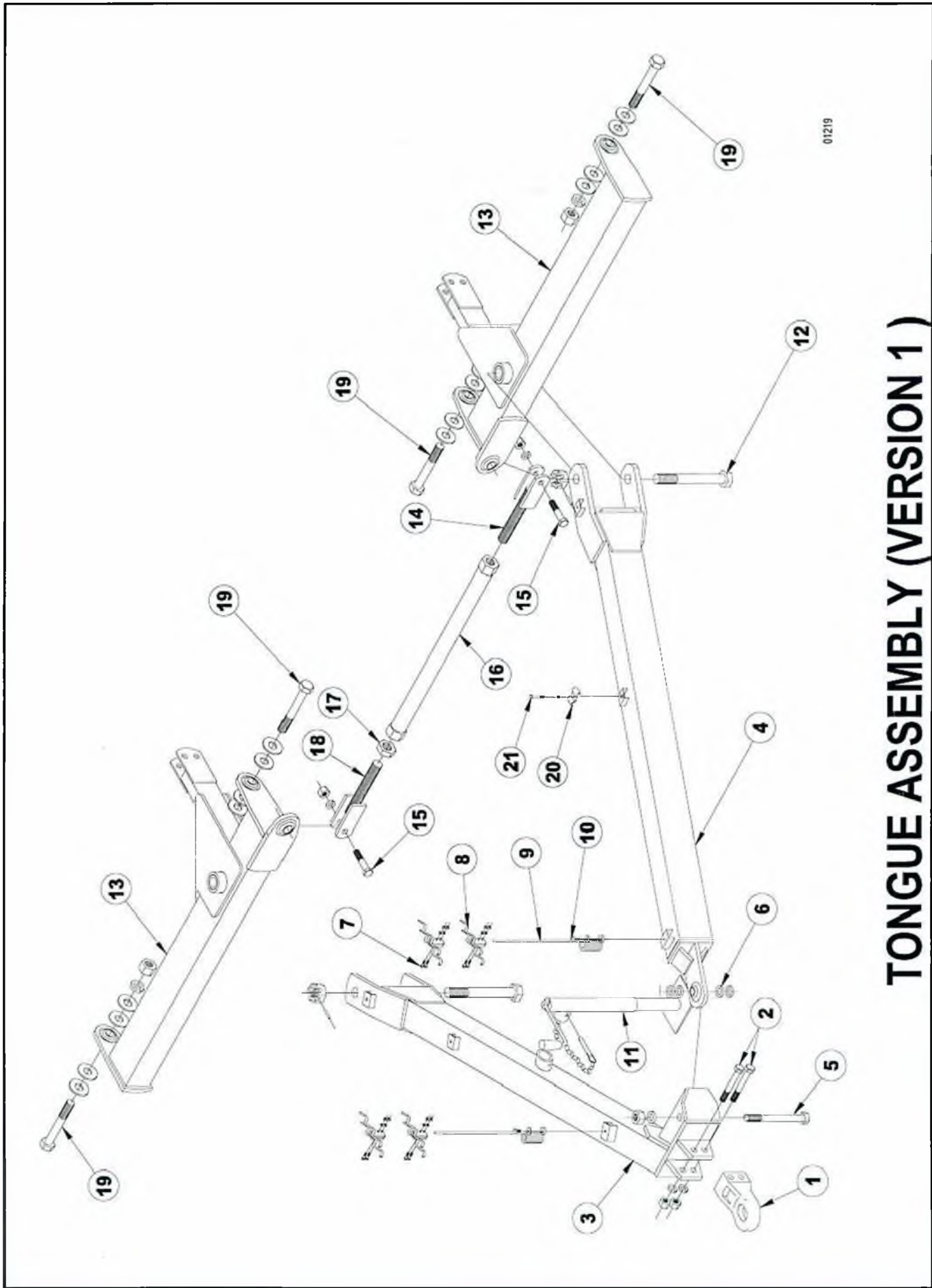


01211

REAR STABILIZER ASSEMBLY

REAR STABILIZER ASSEMBLY

ITEM	PART NO.	DESCRIPTION
1	6893R	REAR STABILIZER
2	6901R	RIGHT REAR STABILIZER MOUNT
3	6902R	LEFT REAR STABILIZER MOUNT
4	1697	1" x 7 1/2" HEX BOLT
5	245	1" FLAT WASHER
6	3938	1" LOCK NUT
7	FK361002	ADJUSTING ROD SPRING, UPPER
8	1220	3/4" x 2" HEX BOLT
	1040	3/4" LOCK WASHER
	106	3/4" HEX NUT
9	1753	1" x 4" HEX BOLT
	1283	1" LOCK WASHER
	110	1" HEX NUT
10	2073	MACHINE BUSHING, 1 1/2" O.D. x 1" I.D.
11	2566	S.M.V. SOCKET
12	2568	1/4" x 3/4" HEX BOLT
	506	1/4" FLAT WASHER
	507	1/4" LOCK WASHER
	508	1/4" HEX NUT
13	7001	S.M.V. EMBLEM

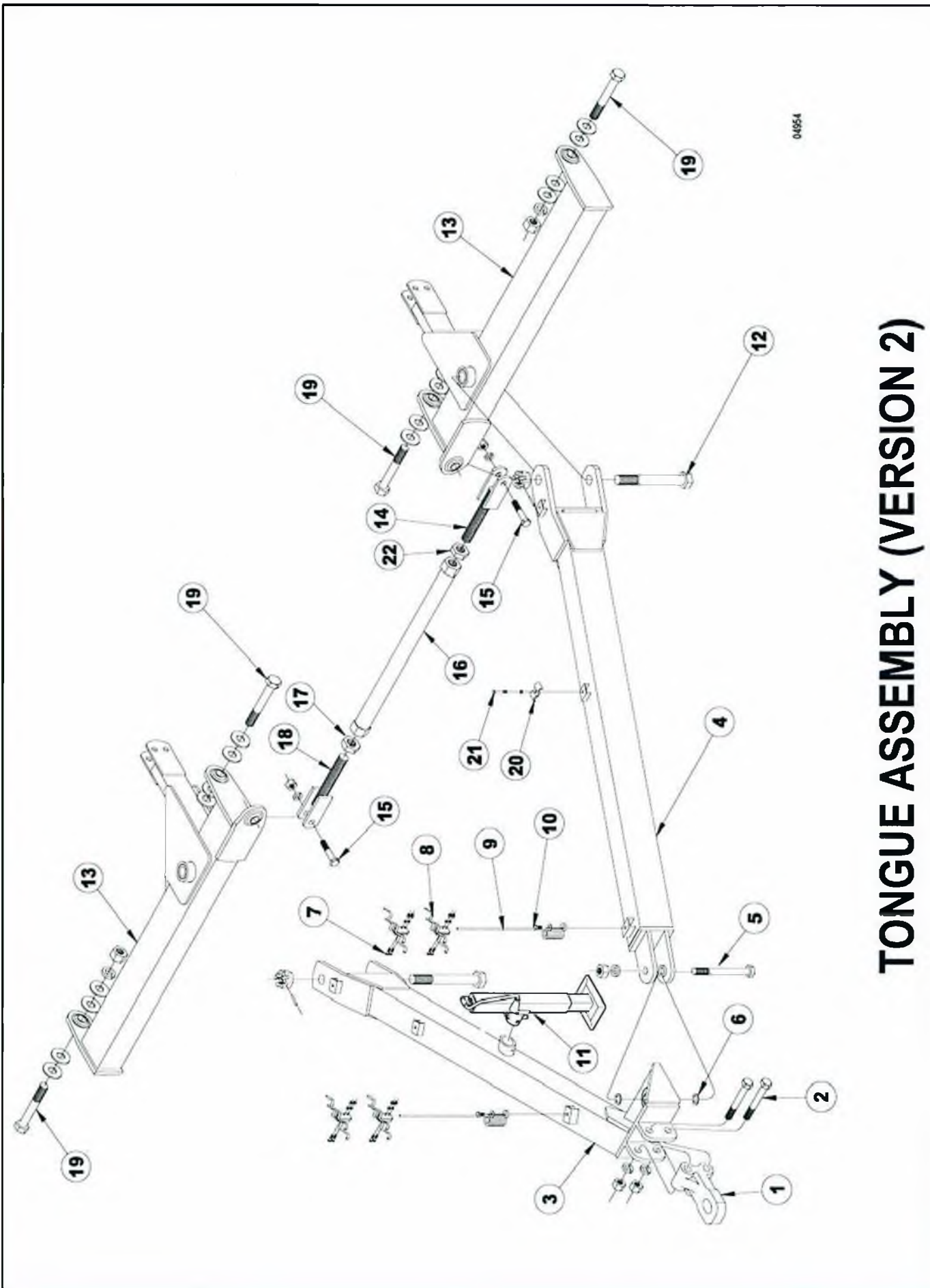


01219

TONGUE ASSEMBLY (VERSION 1)

TONGUE ASSEMBLY (VERSION 1)

ITEM	PART NO.	DESCRIPTION
1	6933R	CAST SINGLE LIP HITCH, 2" HOLE
2	109	1" x 7" HEX BOLT
	1283	1" LOCK WASHER
	110	1" HEX NUT
3	6872R	RIGHT TONGUE
4	6873R	LEFT TONGUE
5	FK150219	1 1/4" x 7 1/2" HEX BOLT
	FK150157	1 1/4" LOCK WASHER
	FK150144	1 1/4" HEX NUT
6	4899	SPACER, 5/16" THICK
7	HCS5/16X1-1/4	5/16" x 1 1/4" HEX BOLT
	3723	5/16" LOCK WASHER
	3724	5/16" HEX NUT
8	4914R	HOSE HOLDER
9	4915R	HOSE HOLDER ROD
10	2045	1/2" x 1 3/4" HEX BOLT
	486	1/2" FLAT WASHER
	2096	1/2" LOCK NUT
11	2378	LONG TONGUE JACK W/TUBE MOUNT
	2378-2	TONGUE JACK PIN
12	6924	1 3/4" x 14" SPECIAL BOLT
	3164	5/16" x 2" ROLL PIN
	2036	1 3/4" SLOTTED HEX NUT
13	6874R	TONGUE MOUNT
14	6877R	LEFT ADJUSTING SCREW
15	1753	1" x 4" HEX BOLT
	1283	1" LOCK WASHER
	110	1" HEX NUT
16	6878R	ADJUSTING LINK
17	2088	1 3/4" JAM NUT
18	6876R	RIGHT ADJUSTING SCREW
	6875R	ADJUSTING LINK ASSEMBLY (ITEMS 14 - 18)
19	4845	1 1/2" x 9 1/2" HEX BOLT
	3095	1 1/2" FLAT WASHER
	2085	1 1/2" LOCK WASHER
	1978	1 1/2" HEX NUT
20	5302	PIPE CLAMP
21	474	3/8" x 2" HEX BOLT
	176	3/8" LOCK WASHER



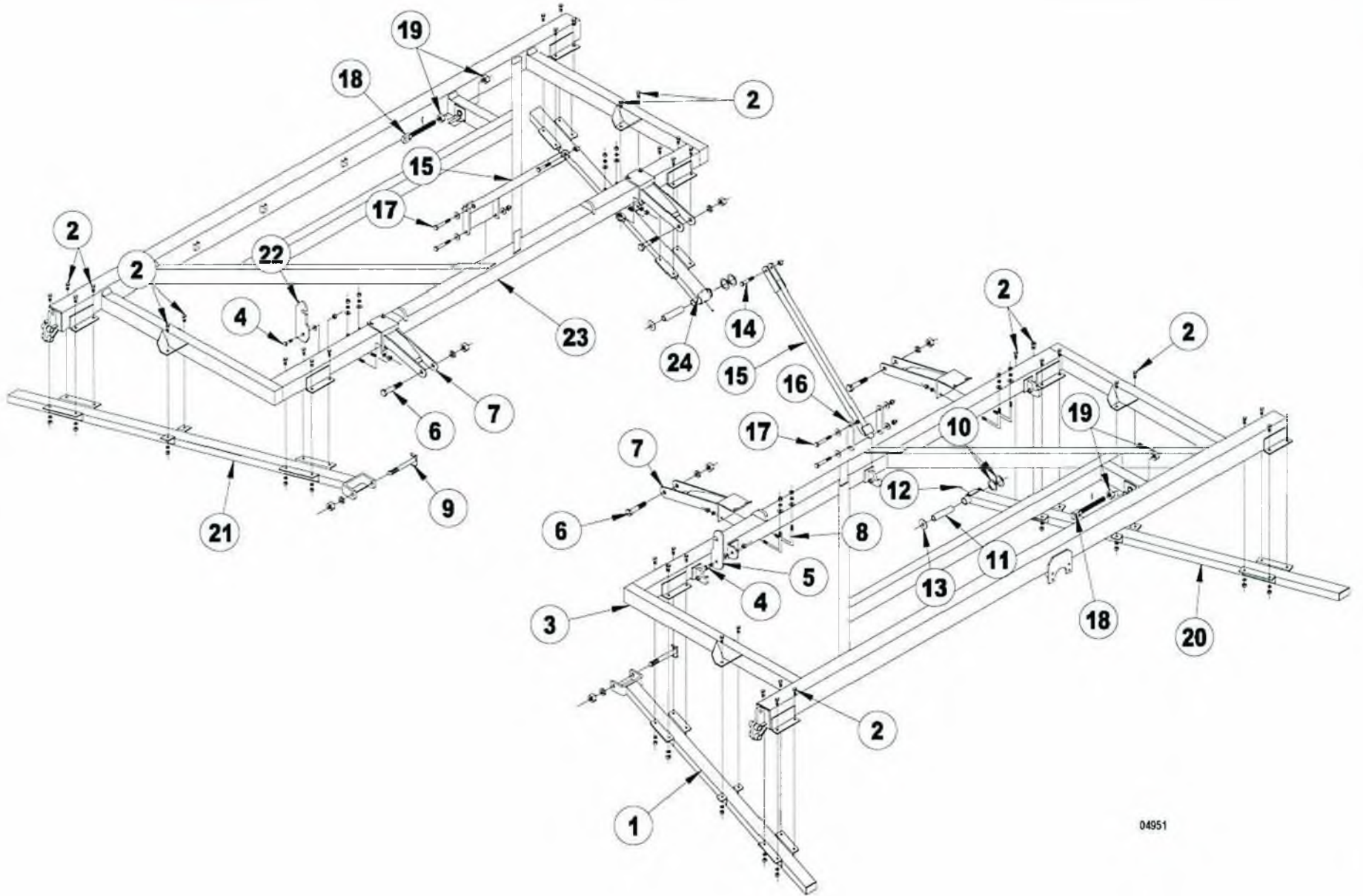
04954

TONGUE ASSEMBLY (VERSION 2)

TONGUE ASSEMBLY (VERSION 2)

ITEM	PART NO.	DESCRIPTION
1	4781R	CAST SINGLE LIP HITCH, 2" HOLE
2	FK350402	1 1/4" x 7" HEX BOLT
	FK150157	1" LOCK WASHER
	FK150144	1" HEX NUT
3	9223R	RIGHT TONGUE
4	9263R	LEFT TONGUE
5	FK150219	1 1/4" x 7 1/2" HEX BOLT
	FK150157	1 1/4" LOCK WASHER
	FK150144	1 1/4" HEX NUT
6	2555	MACHINE BUSHING, 1 1/4" ID, 1 7/8" OD
7	HCS5/16X1-1/4	5/16" x 1 1/4" HEX BOLT
	3723	5/16" LOCK WASHER
	3724	5/16" HEX NUT
8	4914R	HOSE HOLDER
9	4915R	HOSE HOLDER ROD
10	2045	1/2" x 1 3/4" HEX BOLT
	486	1/2" FLAT WASHER
	2096	1/2" LOCK NUT
11	9777	LONG TONGUE JACK, SQUARE W/TUBE MOUNT
	2378-2	TONGUE JACK PIN
12	6924	1 3/4" x 14" SPECIAL BOLT
	3164	5/16" x 2" ROLL PIN
	2036	1 3/4" SLOTTED HEX NUT
13	6874R	TONGUE MOUNT
14	6877R	LEFT ADJUSTING SCREW
15	1753	1" x 4" HEX BOLT
	1283	1" LOCK WASHER
	110	1" HEX NUT
16	6878R	ADJUSTING LINK
17	2088	1 3/4" JAM NUT
18	6876R	RIGHT ADJUSTING SCREW
	6875R	ADJUSTING LINK ASSEMBLY (ITEMS 14 - 18)
19	4845	1 1/2" x 9 1/2" HEX BOLT
	3095	1 1/2" FLAT WASHER
	2085	1 1/2" LOCK WASHER
	1978	1 1/2" HEX NUT
20	5302	PIPE CLAMP
21	474	3/8" x 2" HEX BOLT
	176	3/8" LOCK WASHER
22	6879	JAM NUT, 1 3/4"-5 HEX LH, GR 2 Z/P

P10

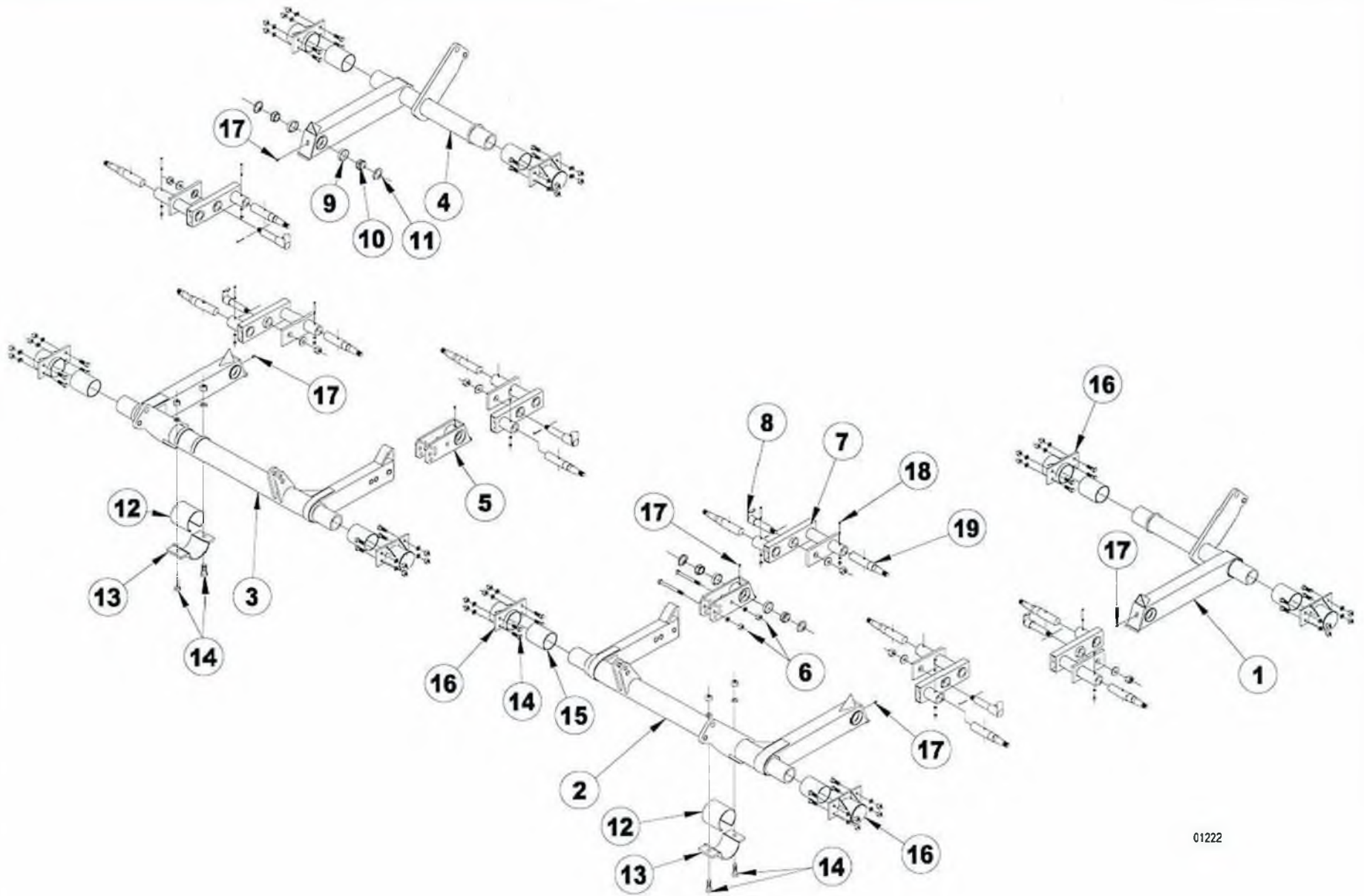


04951

WING FRAME ASSEMBLY

WING FRAME ASSEMBLY

ITEM	PART NO.	DESCRIPTION
1	6949B	42' LEFT WING FRONT GANG BAR
	6890B	45' LEFT WING FRONT GANG BAR
2	6305	3/4" x 2" HEX BOLT, GR. 8
	1040	3/4" LOCK WASHER
	106	3/4" HEX NUT
3	6859R	LEFT WING FRAME
4	1918	1" x 2 1/2" HEX BOLT
	245	1" FLAT WASHER
	3938	1" LOCK NUT
5	6899R	LEFT WING LOCK
6	1767	1 1/2" x 7 1/2" HEX BOLT
	2085	1 1/2" LOCK WASHER
	2079	1 1/2" JAM NUT
7	6909R	BOLT ON HINGE - WING FRAME
8	6912	3/4" x 7 3/4" x 7 3/4" L-BOLT
	1040	3/4" LOCK WASHER
	106	3/4" HEX NUT
9	6169B	1 1/2" x 11 1/2" HINGE BOLT
	2085	1 1/2" LOCK WASHER
	2079	1 1/2" JAM NUT
10	6286	MACHINE BUSHING, 2 1/8" I.D. x 3 1/8" O.D., 10 GA.
11	6046	HINGE BUSHING, 8 3/8"
12	2098-1	GREASE ZERK, 1/8" NPTF, 5/8" L.
13	3095	1 1/2" FLAT WASHER
14	1678	1" x 4 1/2" HEX BOLT
	3938	1" LOCK NUT
15	6908R	WING FOLD ARM
16	6049R	FLEX LINK
17	1891	1" x 5 1/2" HEX BOLT
	FK150173	1" FLAT WASHER
	3938	1" LOCK NUT
18	4622	ADJUSTABLE CYLINDER BLOCK
	4623	GUIDE PIN
19	2079	1 1/2" JAM NUT
20	6951B	42' LEFT WING REAR GANG BAR
	6892B	45' LEFT WING REAR GANG BAR
21	6948B	42' RIGHT WING FRONT GANG BAR
	6889B	45' RIGHT WING FRONT GANG BAR
22	6898R	RIGHT WING LOCK
23	6858R	RIGHT WING FRAME
24	6950B	42' RIGHT WING REAR GANG BAR
	6891B	45' RIGHT WING REAR GANG BAR

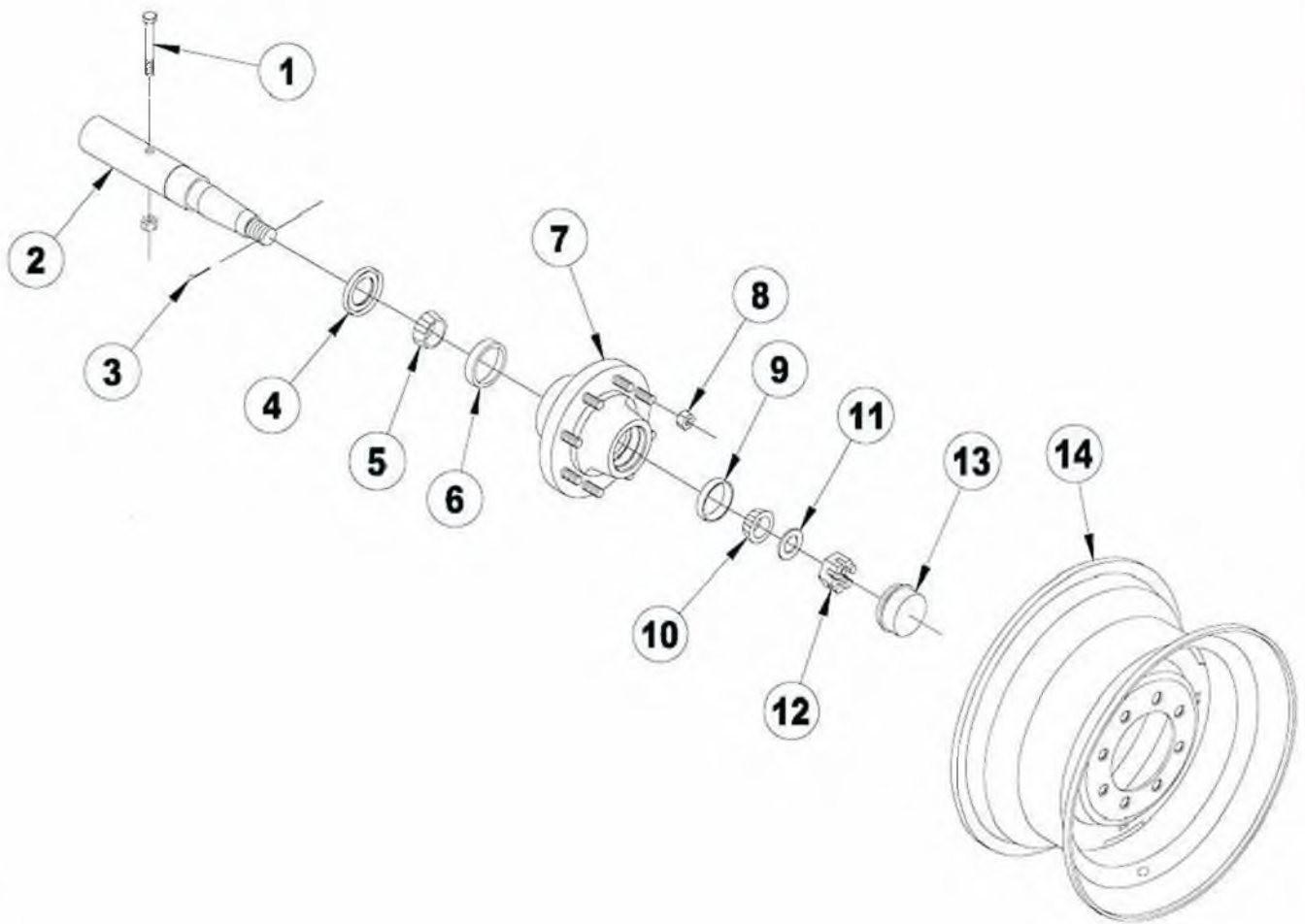


01222

TANDEM LIFT AXLE ASSEMBLY

TANDEM LIFT AXLE ASSEMBLY

ITEM	PART NO.	DESCRIPTION
1	6883R	LEFT WING LIFT
2	6881R	LEFT CENTER LIFT
3	6880R	RIGHT CENTER LIFT
4	6882R	RIGHT WING LIFT
5	6884R	ADJUSTABLE AXLE
6	1891	1" x 5 1/2" HEX BOLT
	1283	1" LOCK WASHER
	110	1" HEX NUT
7	6303R	TANDEM PIVOT (2 1/4" SPINDLE)
8	6121R	2" x 10 3/8" TANDEM PIVOT SPINDLE
	3066	7/32" x 1 1/2" COTTER PIN
	245	1" FLAT WASHER
	2992	1" SLOTTED HEX NUT
9	3062	WALKING BEAM RACE (332)
10	3061	WALKING BEAM BEARING (342A)
11	3063	WALKING BEAM SEAL (NAT. 204035 C/R 22870)
12	6425	LIFT BEARING (SPLIT)
13	6864R	BEARING CAP, 2 HOLE
14	1220	3/4" x 2" HEX BOLT
	1040	3/4" LOCK WASHER
	106	3/4" HEX NUT
15	6150	LIFT BEARING
16	6167R	BEARING CAP, 4 HOLE
17	2098-5	GREASE ZERK, 1/8" NPTF, 1 1/4" L.
18	2569	7/16" x 4" HEX BOLT
	302	7/16" LOCK WASHER
	303	7/16" HEX NUT
19	3687	2 1/4" x 14" SPINDLE, TANDEM TRANSPORT

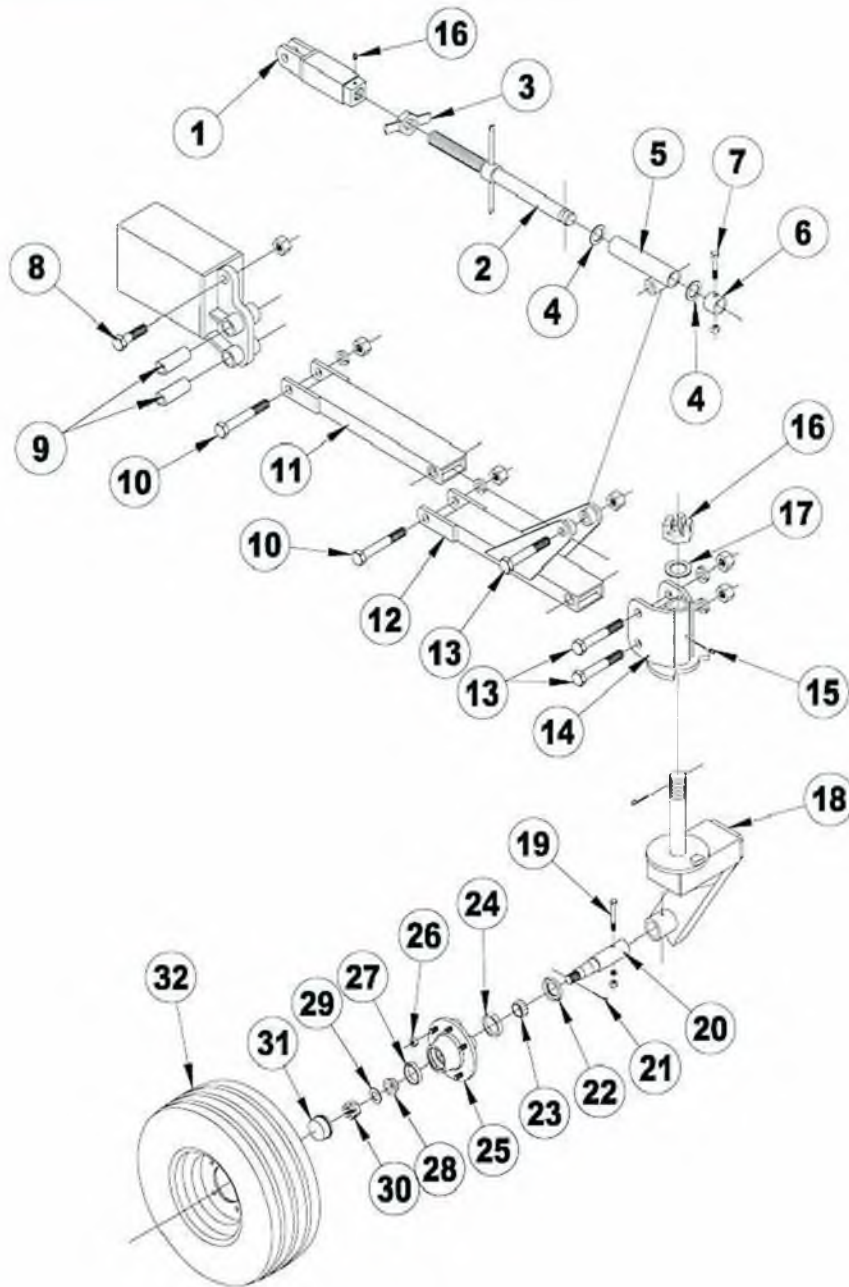


00809

EIGHT BOLT HUB ASSEMBLY

EIGHT BOLT HUB ASSEMBLY

ITEM	PART NO.	DESCRIPTION
1	2569	7/16" x 4" HEX BOLT
	302	7/16" LOCK WASHER
	303	7/16" HEX NUT
2	3687	2 1/4" x 14" SPINDLE, TANDEM TRANSPORT
3	3066	7/32" x 1 1/2" COTTER PIN
4	3301	TRIPLE LIP SEAL
5	3683	INNER BEARING (LM603049)
6	3684	INNER RACE (LM603011)
7	3685	EIGHT BOLT HUB
	3686	EIGHT BOLT HUB ASSEMBLY (ITEMS 3 THRU 13)
8	3118	9/16" LUG BOLT
	3117	9/16" LUG NUT
9	1605	OUTER RACE (LM67010)
10	1606	OUTER BEARING (LM67048)
11	3303	1 1/32" I.D. x 1 3/4" O.D. WASHER
12	3302	1" SLOTTED FULL NUT
13	1610	DUST CAP
14	3688Y	WHEEL, 15 x 10, 8 BOLT
	5578	TIRE, 12.5L x 15, 12 PLY (GY-FI)
	5555Y	TIRE, 12.5L, 12 PLY WITH 15 x 10 WHEEL ASSEMBLY, 8 BOLT (GY-FI)



03888

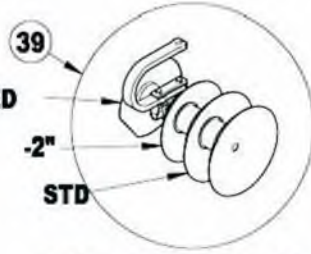
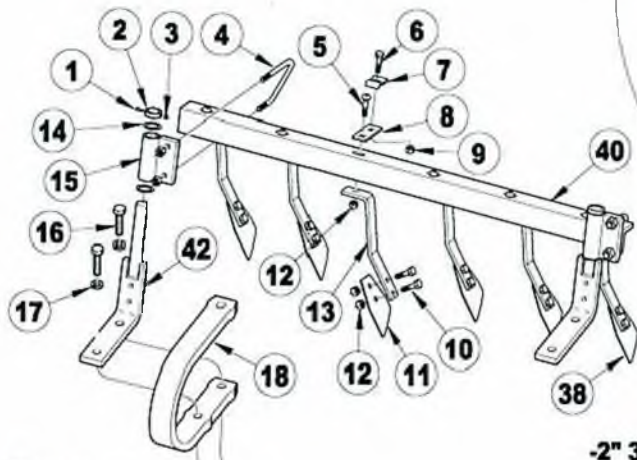
GAUGE WHEEL ASSEMBLY

ITEM	PART NO.	DESCRIPTION
1	2526R	FEMALE LINKAGE
2	6296	CONNECTING LINK SCREW
3	2519	1 1/2" WING NUT
4	3095	FLAT WASHER, 1 1/2" I.D. x 2 1/4" O.D.
5	6298R	CONNECTING LINK MOUNT
6	6297R	CONNECTING LINK COLLAR
7	1304	1/2" x 2 3/4" HEX BOLT
	2096	1/2" LOCK NUT
	6287R	CONNECTING LINK ASSEMBLY (ITEMS 1 - 7)

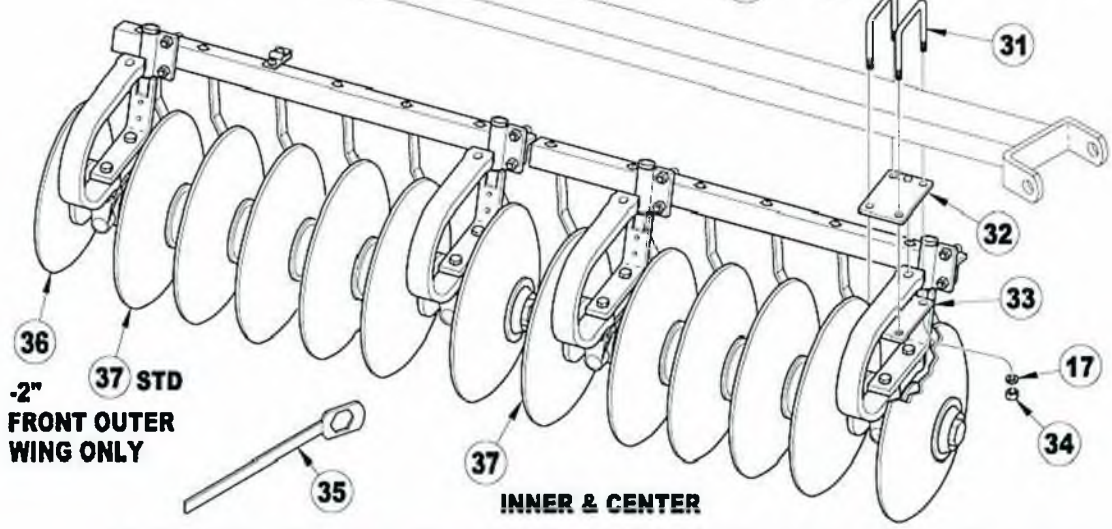
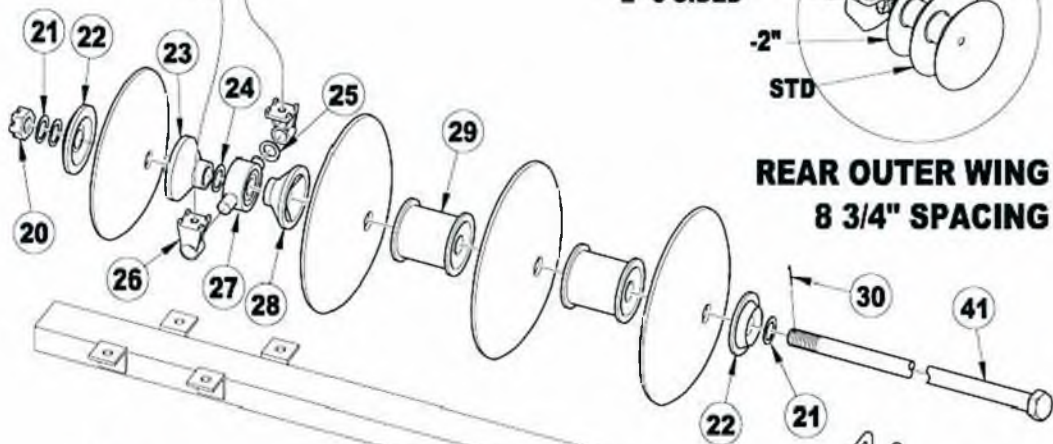
ITEM	PART NO.	DESCRIPTION
8	155	1" x 3 1/2" HEX BOLT
	3938	1" LOCK NUT
9	5197	LOOSE BUSHING
10	FK150052	1" x 6" HEX BOLT
	1283	1" LOCK WASHER
	110	1" HEX NUT
11	5195R	UPPER LINK
12	5196R	LOWER LINK
13	1282	1" x 6 1/2" HEX BOLT
	1283	1" LOCK WASHER
	110	1" HEX NUT
14	5830R	PIVOT PLATE
15	2098-1	GREASE ZERK, 1/8" NPTF, 5/8" L.
16	2036	1 3/4" SLOTTED NUT
17	2756	1 13/16" I.D. x 2 13/16" O.D. FLAT WASHER
18	5831R	H. D. GAUGE WHEEL AXLE
	108	5/16" x 2 1/2" COTTER PIN
19	2585	7/16" x 3 1/2" HEX BOLT
	302	7/16" LOCK WASHER
	303	7/16" HEX NUT
20	3309	GAUGE WHEEL SPINDLE, 1 3/4" x 8 1/2"
21	1609	3/16" x 1 1/2" COTTER PIN
22	1799	TRIPLE LIP SEAL (C/R 17618)
23	1602	INNER BEARING (LM48548)
24	1603	INNER RACE (LM48510)
25	1604	FIVE BOLT HUB WITH RACES
	2799	FIVE BOLT HUB ASSEMBLY (ITEMS 22 - 32)
26	1611-1	1/2" x 2" LUG BOLT
	1611	1/2" LUG NUT
27	1605	OUTER RACE (LM67010)
28	1606	OUTER BEARING (LM67048)
29	3303	1 1/32" I.D. x 1 3/4" O.D. WASHER
30	3302	1" SLOTTED FULL NUT
31	1610	DUST CAP
32	2390Y	WHEEL, 6 x 10
	2801Y	TIRE, 20.5 x 8 x 10 WHEEL ASSEMBLY
	2391	TIRE, 20.5 x 8 x 10
	2392	TUBE, 20.5 x 8 x 10
	5833R	GAUGE WHEEL ASSEMBLY WITH STOP

Version 1 C-Flex & Bearing Assembly

Used 1/2" Shim (#19)
& 3/4" x 4" bolts (#16)
& different bearing
mount (#26)



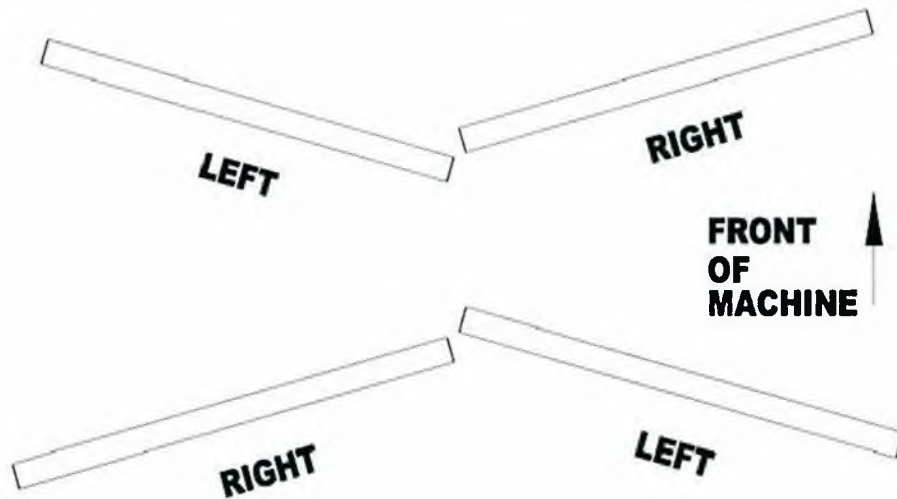
REAR OUTER WING
8 3/4" SPACING



.2" FRONT OUTER WING ONLY

INNER & CENTER

RIGID SCRAPER ASSEMBLY - C-FLEX



01050

SCRAPERS AND C-FLEX SHANKS

RIGID SCRAPER ASSEMBLY - C-FLEX MOUNTED

ITEM	PART NO.	DESCRIPTION
1	3880	5/16" x 1 3/4" SHOULDER BOLT
2	7139B	LOCKING COLLAR W/O SET SCREW
3	3881	1/4" LOCK NUT
4	6773	1/2" x 4 1/8" x 2 1/8" x 3 1/4" W. U-BOLT
5	6101	1/2" x 1 3/4" CARRIAGE BOLT
6	175	3/8" x 1 1/2" HEX BOLT - FRONT GANG ONLY
7	5302	PIPE CLAMP - FRONT GANG ONLY
8	6099B	HOSE CLAMP BRACKET - FRONT GANG ONLY
9	3567	3/8" LOCK NUT - FRONT GANG ONLY
10	1823	1/2" x 1 1/4" HEX BOLT
11	6103B	SCRAPER BLADE, 4"
12	2096	1/2" LOCK NUT
13	6732B	SCRAPER ARM
14	2555	MACHINE BUSHING, 1 1/4" I.D. x 1 7/8" O.D., 10 GA.
15	7140B	SCRAPER BAR MOUNT
16	7138	3/4" x 4" HEX BOLT (Version 1)
	6307	3/4" x 3" HEX BOLT (Current Version 2)
17	1040	3/4" LOCK WASHER
18	5975B	RIGHT C-FLEX SHANK
	5976B	LEFT C-FLEX SHANK
19	3937B	SHIM, 1/2" THICK (Used on Version 1 only)
20	2036	1 3/4" SLOTTED HEX NUT
21	2037	FLAT WASHER, 1 13/16" I.D. x 2 13/16" O.D. x 1/4" THICK
22	2723B	SPRING END COLLAR, 1 3/4" BORE
23	3108B	SPOOL, LONG BEARING, 8 3/4" SP.
24	2756	FLAT WASHER, 1 13/16" I.D. x 2 13/16" O.D., 10 GA.
25	3095	FLAT WASHER, 1 1/2" I.D. x 2 1/4" O.D.

(CONTINUED)

ITEM	PART NO.	DESCRIPTION
26	3096B	TRUNNION BEARING MOUNT (Version 1)
	9691B	TRUNNION BEARING MOUNT (Current Version 2)
27	3090	TRUNNION BEARING COMPLETE
28	2816B	SPOOL, SHORT BEARING, 1 3/4" BORE
29	5980B	SPOOL, FULL, 8 3/4" SP.
30	108	COTTER PIN, 5/16" x 2 1/2"
31	6272B	3/4" x 6 1/4" x 5 13/16" W. U-BOLT
32	6148B	C-FLEX MOUNTING PLATE, TOP
33	6147B	C-FLEX MOUNTING PLATE
34	106	3/4" HEX NUT
35	2194	GANG WRENCH
36	3271	19.69" BLADE, 1 3/4" BORE, 4 GA. 1 7/8" CONCAVITY
	2686	22" BLADE, 1 3/4" BORE, 4 GA. 2 1/2" CONCAVITY
37	2686	22" BLADE, 1 3/4" BORE, 4 GA. 2 1/2" CONCAVITY
	7587	24.38" BLADE, 1 3/4" BORE, 6 GA, 2.39" CONCAVITY
	7588	24.51" BLADE, 1 3/4" BORE, 4 GA. 2 .42" CONCAVITY
38	6733B	RIGHT SCRAPER BLADE WITH ARM - FITS RIGHT FRONT OR LEFT REAR GANGS
	6734B	LEFT SCRAPER BLADE WITH ARM - FITS LEFT FRONT OR RIGHT REAR GANGS
39	2686	22" BLADE, 1 3/4" BORE, 4 GA. 2 1/2" CONCAVITY (STD.)
	3271	19.69" BLADE, 1 3/4" BORE, 4 GA. 1 7/8" CONCAVITY (-2")
	6639	18" THREE SIDED BLADE, 1 3/4" BORE, 7 GA. 1 3/4" CONCAVITY (-2")
	7587	24.38" BLADE, 1 3/4" BORE, 6 GA, 2.39" CONCAVITY (STD.)
	9820	22" BLADE, 1 3/4" BORE, 6 GA. 2 1/2" CONCAVITY
	6640	20" THREE SIDED BLADE, 1 3/4" BORE, 7 GA. 1 3/4" CONCAVITY (-2")
	7588	24.51" BLADE, 1 3/4" BORE, 4 GA. 2 .42" CONCAVITY
	2686	22" BLADE, 1 3/4" BORE, 4 GA. 2 1/2" CONCAVITY (STD.)
	6641	20" THREE SIDED BLADE, 1 3/4" BORE, 4 GA. 2" CONCAVITY (-2")

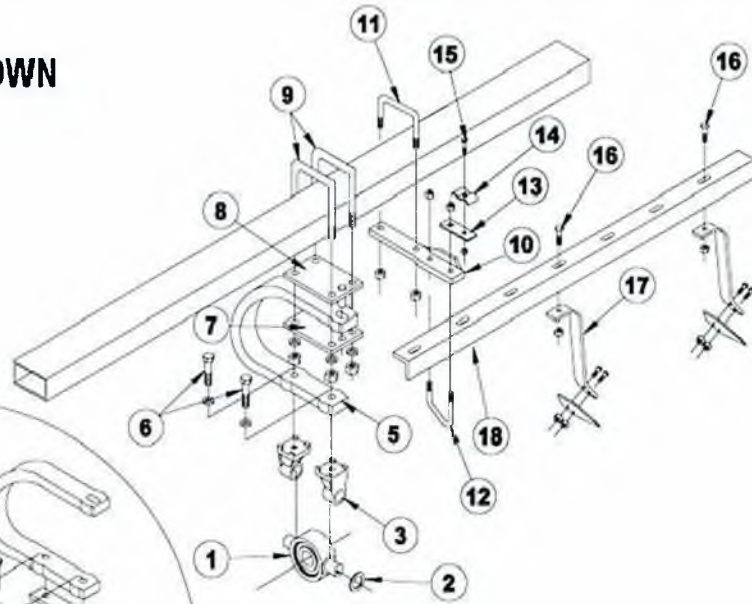
(CONTINUED)

RIGID SCRAPER BARS, 8 3/4" SPACING

40	7144B	42' & 45' RIGHT CENTER FRONT, 7 HOLE
	7145B	42' & 45' LEFT CENTER FRONT, 7 HOLE
	7143B	42' & 45' RIGHT CENTER REAR, 6 HOLE
	7142B	42' & 45' LEFT CENTER REAR, 6 HOLE
	7142B	42' RIGHT WING FRONT, 6 HOLE
	7143B	42' LEFT WING FRONT, 6 HOLE
	7148B	42' & 45' RIGHT WING FRONT, 9 HOLE
	7149B	42' & 45' LEFT WING FRONT, 9 HOLE
	7146B	45' RIGHT WING FRONT, 8 HOLE
	7147B	45' LEFT WING FRONT, 8 HOLE
	7149B	42' & 45' RIGHT WING REAR, 9 HOLE
	7148B	42' & 45' LEFT WING REAR, 9 HOLE
	7153B	45' RIGHT WING REAR, 11 HOLE
	7152B	45' LEFT WING REAR, 11 HOLE

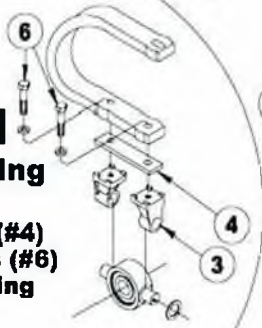
ITEM	PART NO.	DESCRIPTION	7 GA.	4 GA.
41	3897	42' & 45' CF, 1 3/4" SHAFT, 8 3/4" SP.	119 1/2"	
	6001	42' & 45' CR, 1 3/4" SHAFT, 8 3/4" SP.	111"	
	6927	42' & 45' CF, 1 3/4" SHAFT, 8 3/4" SP.		120 1/2"
	6002	42' & 45' CR, 1 3/4" SHAFT, 8 3/4" SP.		112"
	3001	42' IFW, 1 3/4" SHAFT, 8 3/4" SP.	49 3/4"	
	7135	42' OFW, 1 3/4" SHAFT, 8 3/4" SP.	84 3/4"	
	5994	42' IRW & ORW, 1 3/4" SHAFT, 8 3/4" SP.	76"	
	5982	42' IFW, 1 3/4" SHAFT, 8 3/4" SP.		50 1/4"
	5988	42' OFW, 1 3/4" SHAFT, 8 3/4" SP.		85 1/2"
	5995	42' IRW & ORW, 1 3/4" SHAFT, 8 3/4" SP.		76 1/2"
	5989	45' IFW, 1 3/4" SHAFT, 8 3/4" SP.	67 1/4"	
	7135	45' OFW, 1 3/4" SHAFT, 8 3/4" SP.	84 3/4"	
	5994	45' IRW, 1 3/4" SHAFT, 8 3/4" SP.	76"	
	3954	45' ORW, 1 3/4" SHAFT, 8 3/4" SP.	93 1/2"	
	5991	45' IFW, 1 3/4" SHAFT, 8 3/4" SP.		68"
	5988	45' OFW, 1 3/4" SHAFT, 8 3/4" SP.		85 1/2"
	5995	45' IRW, 1 3/4" SHAFT, 8 3/4" SP.		76 1/2"
	5998	45' ORW, 1 3/4" SHAFT, 8 3/4" SP.		94 1/4"
42	7141B	SCRAPER BAR ANCHOR, RIGID		

FRONT GANG SHOWN

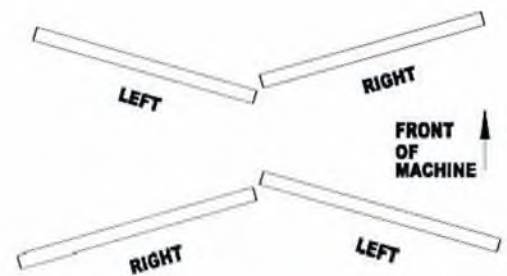


**Version 1
C-Flex & Bearing
Assembly**

Used 1/2" Shim (#4)
& 3/4" x 4" bolts (#6)
& different bearing
mount (#3)



00757



SCRAPERS AND C-FLEX SHANKS

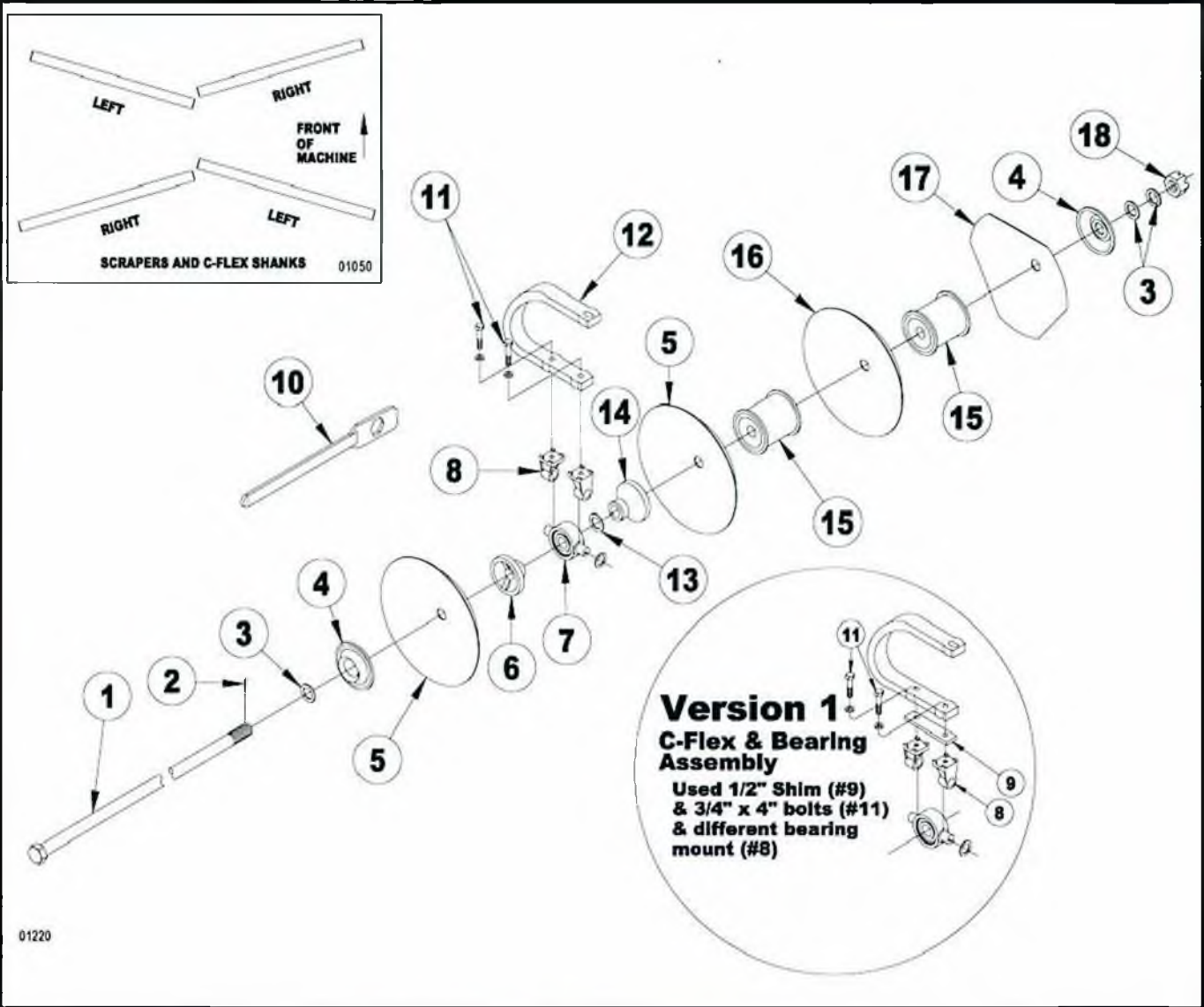
01050

RIGID SCRAPER ASSEMBLY

ITEM	PART NO.	DESCRIPTION
1	3090	TRUNNION BEARING COMPLETE
2	3095	FLAT WASHER, 1 1/2" I.D. x 2 1/4" O.D.
3	3096B	TRUNNION BEARING MOUNT (Version 1)
	9691B	TRUNNION BEARING MOUNT (Current Version 2)
4	3937B	SHIM, 1/2" THICK (Used on Version 1 only)
5	5975B	RIGHT C-FLEX SHANK
	5976B	LEFT C-FLEX SHANK
6	7138	3/4" x 4" HEX BOLT (Version 1)
	6307	3/4" x 3" HEX BOLT (Current Version 2)
	1040	3/4" LOCK WASHER
7	6147B	C-FLEX MOUNTING PLATE
8	6148B	C-FLEX MOUNTING PLATE, TOP
9	6272B	3/4" x 6 1/4" x 5 13/16" W. U-BOLT
	1040	3/4" LOCK WASHER
	106	3/4" HEX NUT
10	6796B	SCRAPER BAR ANCHOR
11	2815	5/8" x 4 1/2" x 5 11/16" W. U-BOLT
	669-1	5/8" LOCK NUT

RIGID SCRAPER ASSEMBLY

ITEM	PART NO.	DESCRIPTION
12	6773	1/2" x 4 1/8" x 2 1/8" x 3 1/4" W. U-BOLT
	2096	1/2" LOCK NUT
13	6099B	HOSE CLAMP BRACKET - FRONT GANG ONLY
14	5302	PIPE CLAMP - FRONT GANG ONLY
15	175	3/8" x 1 1/2" HEX BOLT - FRONT GANG ONLY
	3567	3/8" LOCK NUT - FRONT GANG ONLY
16	6101	1/2" x 1 3/4" CARRIAGE BOLT
	2096	1/2" LOCK NUT
17	6733B	RIGHT SCRAPER BLADE WITH ARM - FITS RIGHT FRONT OR LEFT REAR GANGS
	6734B	LEFT SCRAPER BLADE WITH ARM - FITS LEFT FRONT OR RIGHT REAR GANGS
	6732B	SCRAPER ARM
	6103B	SCRAPER BLADE, 4"
	1823	1/2" x 1 1/4" HEX BOLT
	2096	1/2" LOCK NUT
RIGID SCRAPER BARS, 8.75" SPACING		
18	6092B	42' & 45' RIGHT & LEFT CENTER FRONT, 7 HOLE
	6091B	42' & 45' RIGHT & LEFT CENTER REAR, 6 HOLE
		42' RIGHT & LEFT WING FRONT, 6 HOLE
	6094B	42' & 45' RIGHT & LEFT WING FRONT, 9 HOLE
		42' & 45' RIGHT & LEFT WING REAR, 9 HOLE
	6093B	45' RIGHT & LEFT WING FRONT, 8 HOLE
	6096B	45' RIGHT & LEFT WING REAR, 11 HOLE



DISC GANG ASSEMBLY

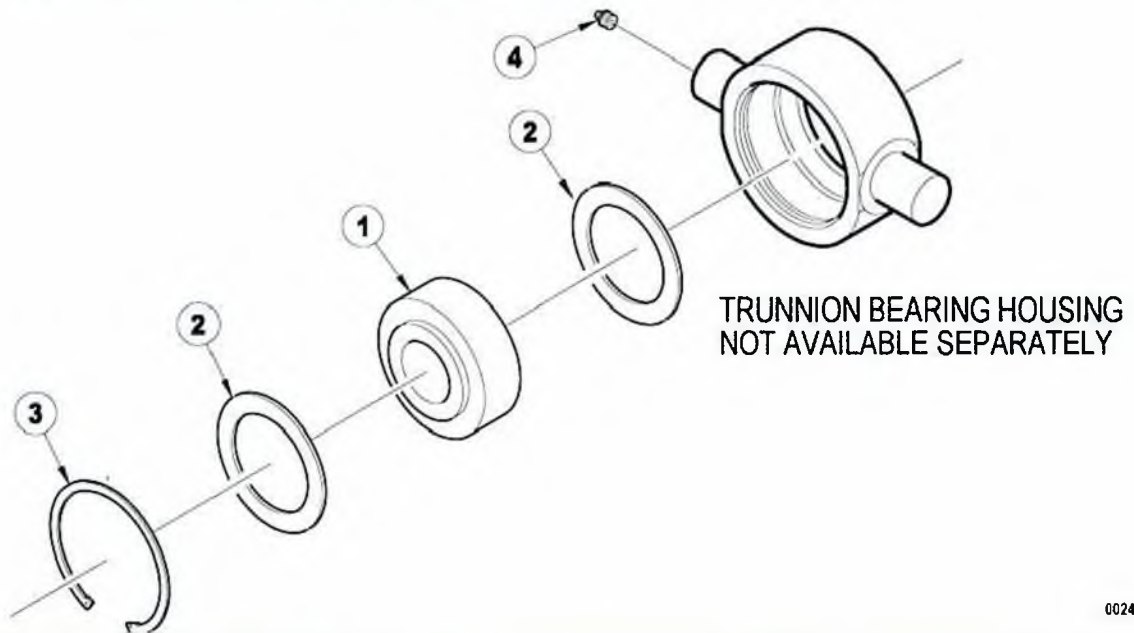
ITEM	PART NO.	DESCRIPTION	6 GA. BLADES	4 GA. BLADES
1	3897	42' & 45' CF, 1 3/4" SHAFT, 8.75" SP.	119 1/2"	
	6001	42' & 45' CR, 1 3/4" SHAFT, 8.75" SP.	111"	
	6927	42' & 45' CF, 1 3/4" SHAFT, 8.75" SP.		120 1/2"
	6002	42' & 45' CR, 1 3/4" SHAFT, 8.75" SP.		112"
	3001	42' IFW, 1 3/4" SHAFT, 8.75" SP.	49 3/4"	
	7135	42' OFW, 1 3/4" SHAFT, 8.75" SP.	84 3/4"	
	5994	42, IRW & ORW, 1 3/4" SHAFT, 8.75" SP.	76"	
	5982	42' IFW, 1 3/4" SHAFT, 8.75" SP.		50 1/4"
	5988	42' OFW, 1 3/4" SHAFT, 8.75" SP.		85 1/2"
	5995	42' IRW & ORW, 1 3/4" SHAFT, 8.75" SP.		76 1/2"

ITEM	PART NO.	DESCRIPTION	6 GA. BLADES	4 GA. BLADES
	5989	45' IFW, 1 3/4" SHAFT, 8.75" SP.	67 1/4"	
	7135	45' OFW, 1 3/4" SHAFT, 8.75" SP.	84 3/4"	
	5994	45' IRW, 1 3/4" SHAFT, 8.75" SP.	76"	
	3954	45' ORW, 1 3/4" SHAFT, 8.75" SP.	93 1/2"	
	5991	45' IFW, 1 3/4" SHAFT, 8.75" SP.		68"
	5988	45' OFW, 1 3/4" SHAFT, 8.75" SP.		85 1/2"
	5995	45' IRW, 1 3/4" SHAFT, 8.75" SP.		76 1/2"
	5998	45' ORW, 1 3/4" SHAFT, 8.75" SP.		94 1/4"

ITEM	PART NO.	DESCRIPTION
2	108	COTTER PIN, 5/16" x 2 1/2"
3	2037	FLAT WASHER, 1 13/16" I.D. x 2 13/16" O.D. x 1/4" THICK
4	2723B	SPRING END COLLAR, 1 3/4" BORE
5	2686	22" BLADE, 1 3/4" BORE, 4 GA. 2 1/2" CONCAVITY
	7587	24.38" BLADE, 1 3/4" BORE, 6 GA., 2.39" CONCAVITY
	7588	24.51" BLADE, 1 3/4" BORE, 4 GA. 2.42" CONCAVITY
6	2816B	SPOOL, SHORT BEARING, 1 3/4" BORE
7	3090	TRUNNION BEARING COMPLETE
	3095	1 1/2" I.D. x 2 1/2" O.D. FLAT WASHER
8	3096B	TRUNNION BEARING MOUNT (Version 1)
	9691B	TRUNNION BEARING MOUNT (Current Version 2)
9	3937B	SHIM, 1/2" THICK (Used on Version 1 only)
10	2194	GANG WRENCH
11	7138	3/4" x 4" HEX BOLT (Version 1)
	6307	3/4" x 3" HEX BOLT (Current Version 2)
	1040	3/4" LOCK WASHER
12	5975B	RIGHT C-FLEX SHANK
	5976B	LEFT C-FLEX SHANK
13	2756	FLAT WASHER, 1 13/16" I.D. x 2 13/16" O.D., 10 GA.
14	3108B	SPOOL, LONG BEARING, 8 3/4" SP.
15	5980B	SPOOL, FULL, 8 3/4" SP.
16	3271	19.69" BLADE, 1 3/4" BORE, 4 GA. 1 7/8" CONCAVITY
	2686	22" BLADE, 1 3/4" BORE, 4 GA. 2 1/2" CONCAVITY
	9820	22" BLADE, 1 3/4" BORE, 6 GA. 2 1/2" CONCAVITY
17	6639	18" THREE SIDED BLADE, 1 3/4" BORE, 7 GA. 1 3/4" CONCAVITY
	6640	20" THREE SIDED BLADE, 1 3/4" BORE, 7 GA. 1 3/4" CONCAVITY
	6641	20" THREE SIDED BLADE, 1 3/4" BORE, 4 GA. 2" CONCAVITY
18	2036	1 3/4" SLOTTED HEX NUT

TRUNNION BEARING REPLACEMENT PARTS

Due to circumstances beyond our control we have been forced to obtain complete bearings and related parts from more than one supplier. Unfortunately not all of these parts are completely interchangeable. The differences are minor but important for obtaining good service life of replacement bearings. Two trunnion housings have been used which require different shield washers and bearing shield widths. The following charts indicate which parts are compatible. In situations where adequate information cannot be obtained from the customer to insure the correct combination of components we recommend replacement of the complete bearing assembly. We apologize for the inconvenience of this situation and will do our best to provide the parts you need, whichever method you choose, to service our customer.



00243

3090 TRUNNION BEARING COMPLETE

ITEM	PART NO.	DESCRIPTION
(SUNFLOWER HOUSING, BCA BEARING)		
1	3091	(The housing will be stamped with an S on the snap ring side.) TRUNNION BEARING REPLACEMENT
2	4924	
3	3094	
4	2098-1	
(SUNFLOWER HOUSING, BCA BEARING)		
1	3091	TRUNNION BEARING REPLACEMENT
2	4924	
3	4925	
4	2098-1	

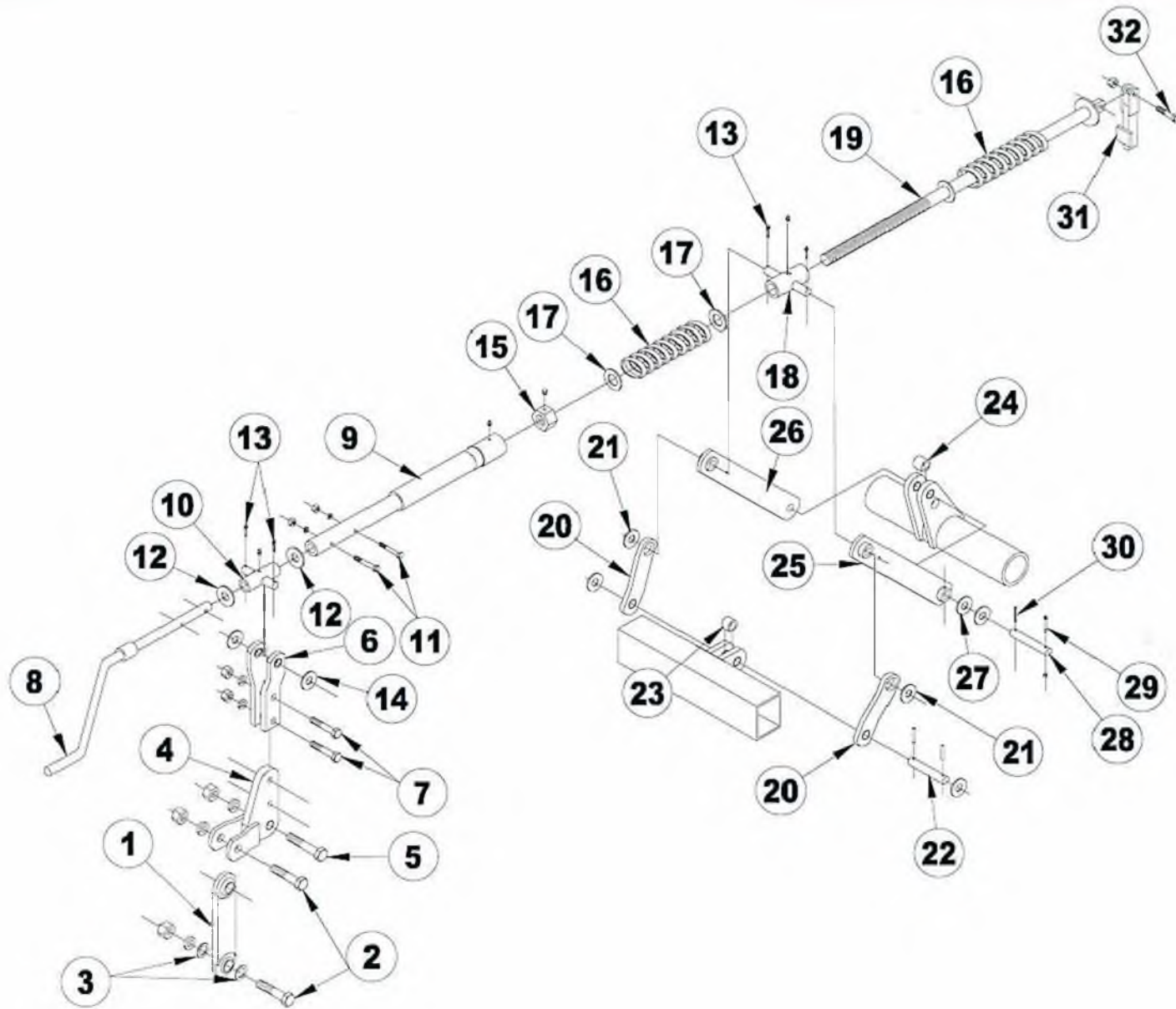
ITEM	PART NO.	DESCRIPTION
(SUNFLOWER HOUSING, SEAL MASTER BEARING)		
1	5338	TRUNNION BEARING REPLACEMENT (SEAL MASTER - P.N. SK-1507)
2	5337	TRUNNION BEARING SHIELD (SEAL MASTER)
3	4925	TRUNNION BEARING RETAINER (SUNFLOWER)
4	2098-1	1/8" GREASE ZERK
(FAFNIR HOUSING, BCA BEARING)		
1	3091	TRUNNION BEARING REPLACEMENT
2	3093	TRUNNION BEARING SHIELD
3	3094	TRUNNION BEARING RETAINER (FAFNIR)
4	2098-1	1/8" GREASE ZERK
(FAFNIR HOUSING, SEAL MASTER BEARING)		
1	5338	TRUNNION BEARING REPLACEMENT (SEAL MASTER - P.N. SK-1507)
2	3093	TRUNNION BEARING SHIELD
3	3094	TRUNNION BEARING RETAINER (FAFNIR)
4	2098-1	1/8" GREASE ZERK
(FAFNIR HOUSING, FAFNIR BEARING)		
1	5434	TRUNNION BEARING REPLACEMENT (FAFNIR - P.N. GW211PP25)
2	3093	TRUNNION BEARING SHIELD
3	3094	TRUNNION BEARING RETAINER (FAFNIR)
4	2098-1	1/8" GREASE ZERK
(SUNFLOWER HOUSING, FAFNIR BEARING)		
1	5434	TRUNNION BEARING REPLACEMENT (FAFNIR - P.N. GW211PP25)
2	5337	TRUNNION BEARING SHIELD
3	4925	TRUNNION BEARING RETAINER (SUNFLOWER)
4	2098-1	1/8" GREASE ZERK

TRUNNION BEARING SHIELD SPECIFICATIONS

3093	2.805" I.D. x 3.929" O.D. x .1345" THICK
4924	2.8375" I.D. x 3.929" O.D. x .100" THICK
5337	2.77" I.D. x 3.929" O.D. x .100" THICK

TRUNNION BEARING RETAINER THICKNESSES

3094	.109" THICK
4925	.092" THICK



STANDARD SELF LEVELER ASSEMBLY

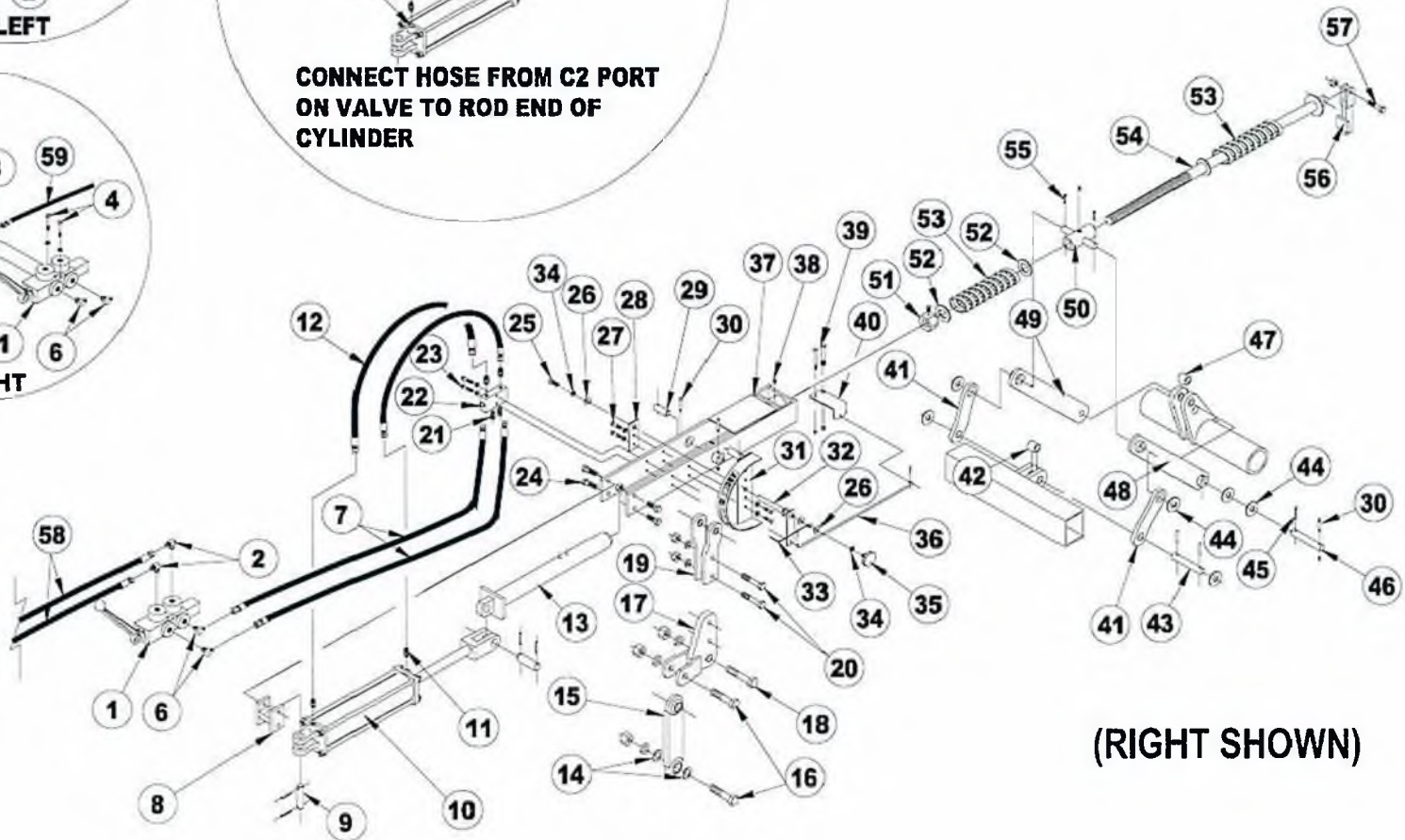
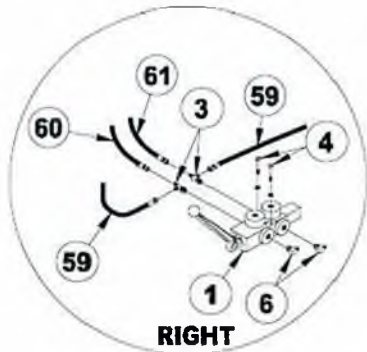
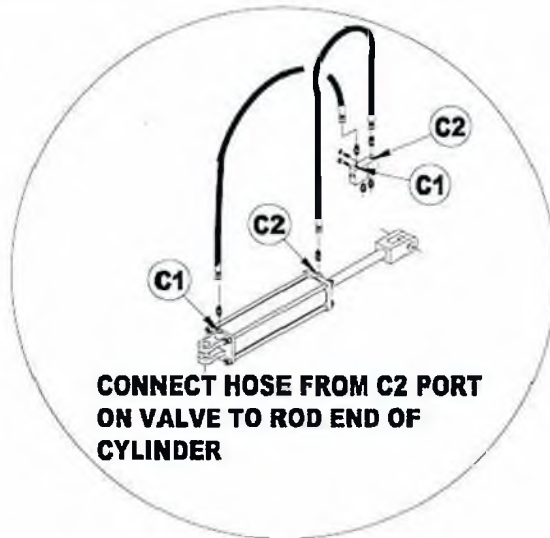
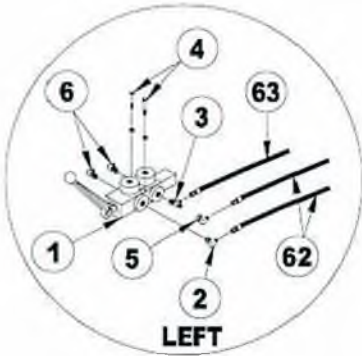
STANDARD SELF LEVELER ASSEMBLY

ITEM	PART NO.	DESCRIPTION
1	6071R	CONNECTING LINK, BALL JOINT
2	1753	1" x 4" HEX BOLT
	1283	1" LOCK WASHER
	110	1" HEX NUT
3	2073	MACHINE BUSHING
4	6075R	LEVELER "L"
	1946	WEAR BUSHING
5	1678	1" x 4 1/2" HEX BOLT
	1283	1" LOCK WASHER
	110	1" HEX NUT
6	6074R	LEVELER CROSS BRACKET
	5934	BUSHING, 5/8" L.
7	6406	3/4" x 3 1/2" HEX BOLT, 1" THD.
	1040	3/4" LOCK WASHER
	106	3/4" HEX NUT
8	6120R	LEVELER CRANK
9	6936R	34" LEVELER PIPE (RIGHT CENTER FRAME)
	6937R	60" LEVELER PIPE (LEFT CENTER FRAME)
	2098-1	GREASE ZERK, 1/8" NPTF, 5/8" L.
10	6280R	LEVELER CROSS
	2098-1	GREASE ZERK, 1/8" NPTF, 5/8" L.
11	6282	7/16" x 3" HEX BOLT
	302	7/16" LOCK WASHER
	303	7/16" HEX NUT
12	6466	MACHINE BUSHING, 14 GA.
13	1609	COTTER PIN, 3/16" x 1 1/2"
14	245	1" FLAT WASHER
15	1880	1 1/2" JAM NUT W/SET SCREW
16	6062R	COMPRESSION SPRING, 3" O.D. x 1.625" I.D.
17	2755	FLAT WASHER, 19/16" I.D. x 2 13/16" O.D.
18	6076R	LEVELER CROSS, 5"
	2098-1	GREASE ZERK, 1/8" NPTF, 5/8" L.
19	6073R	LEVELER SCREW, 43 3/8" L.
	6166R	LEVELER SCREW ASSEMBLY, ITEMS 15 - 19
20	6059R	PIVOT LINK
	5934	BUSHING, 5/8" L.
21	245	1" FLAT WASHER
22	5251	1" x 5 13/16" PIN
	245	1" FLAT WASHER
	3164	5/16" x 2" ROLL PIN
23	6078R	1 1/8" L. BUSHING

(CONTINUED)

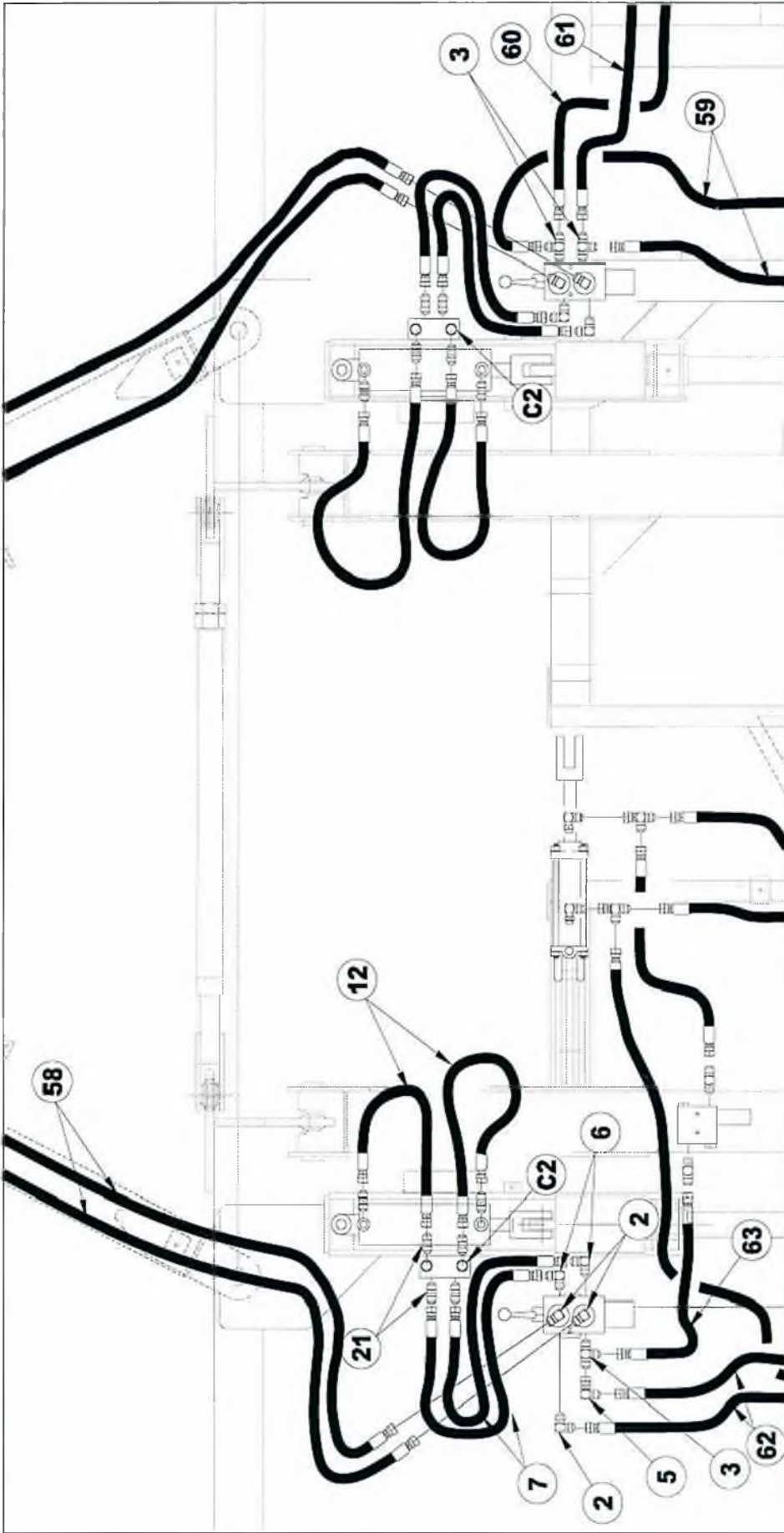
STANDARD SELF LEVELER ASSEMBLY

ITEM	PART NO.	DESCRIPTION
24	6077R	13/8" L. BUSHING
25	6067R	LEFT LIFT AXLE LINK
26	6066R	RIGHT LIFT AXLE LINK
27	245	1" FLAT WASHER
28	6171	1" x 6" PIN
29	3880	5/16" x 1 3/4" SHOULDER BOLT
	3881	1/4" LOCK NUT
30	3164	5/16" x 2" ROLL PIN
31	6065R	LEVELER SCREW ANCHOR
32	FK150058	5/8" x 2 1/2" HEX BOLT
	669-1	5/8" LOCK NUT



P31

HYDRAULIC SELF LEVELER ASSEMBLY (OPTIONAL)



01263

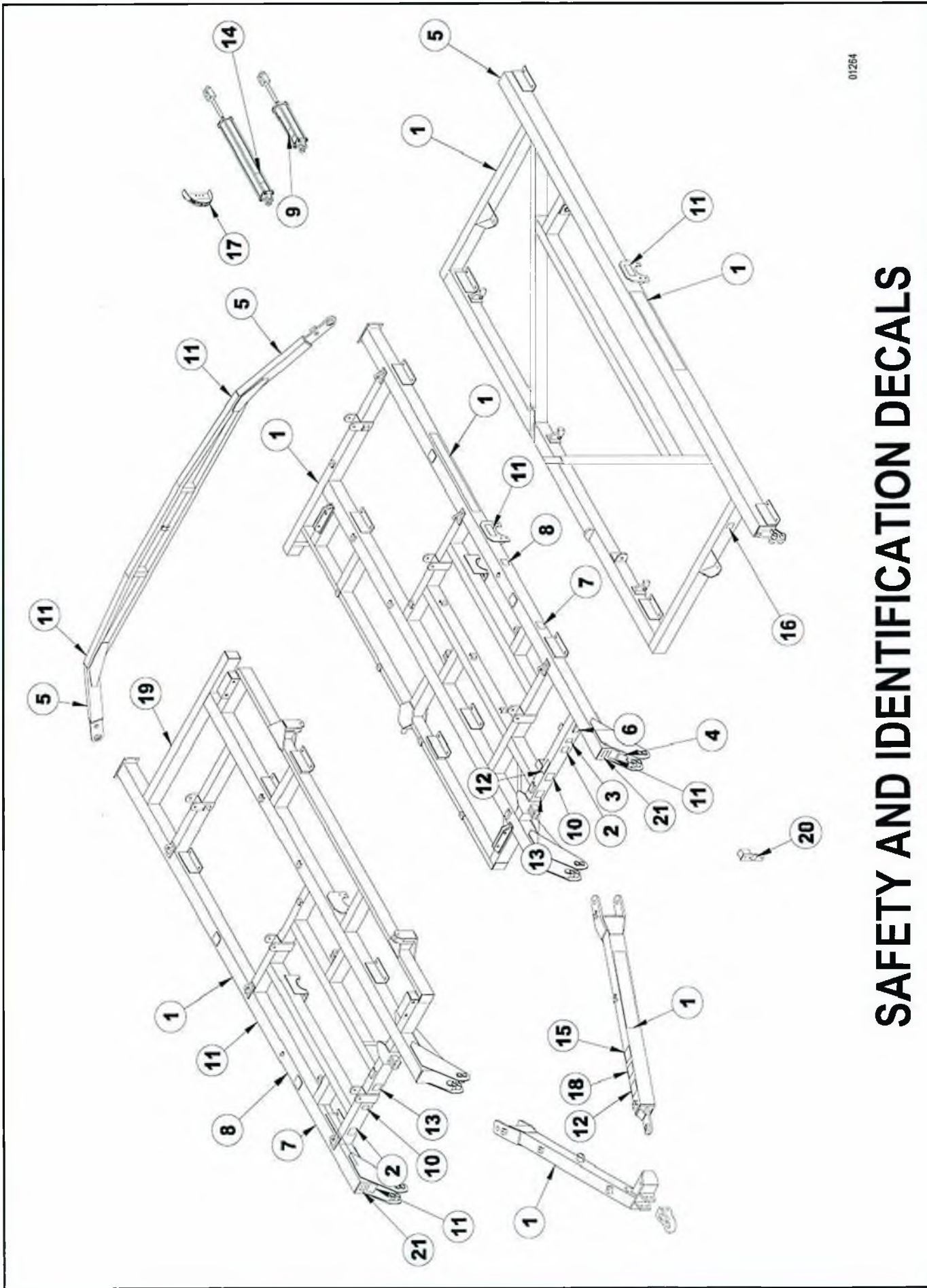
HYDRAULICS FOR HYDRAULIC SELF LEVELER

HYDRAULIC SELF LEVELER ASSY. (OPTIONAL)

ITEM	PART NO.	DESCRIPTION
1	4550	SELECTOR VALVE, 3/4"-16 SAE
2	4454	90° STRAIGHT THREAD ELBOW, 3/4"-16 M.F. x 3/4"-16 O.R.
3	4474	STRAIGHT THREAD RUN TEE, 3/4"-16 M.F. x 3/4"-16 O.R.
4	2487	3/8" x 2 1/2" HEX BOLT
	176	3/8" LOCK WASHER
5	4472	90° SWIVEL ELBOW, 3/4"-16 M.F. x 3/4"-16 F.F.
6	6935	90° STRAIGHT THREAD ELBOW, 9/16"-18 M.F. x 3/4"-16 O.R.
7	4030011	HOSE, 1/4" x 30" LONG, FEMALE ENDS
8	6740R	LEVELER HEAD MOUNTING BRACKET
9	5339	1" x 4 1/16" PIN
	3164	5/16" x 2" ROLL PIN
10	4446R	CYLINDER, 3" x 8" (20 1/4" CPC) ORB CROSS
11	6735	STRAIGHT THREAD CONNECTOR, 9/16"-18 M.F. X 3/4"-16 O.R. W/1/32" REST.
12	4024011	HOSE, 1/4" x 24" LONG, FEMALE ENDS
13	6921R	34" SELF LEVELER TUBE (RIGHT CENTER FRAME)
	6920R	60" SELF LEVELER TUBE (LEFT CENTER FRAME)
14	2073	MACHINE BUSHING
15	6071R	CONNECTING LINK, BALL JOINT
16	1753	1" x 4" HEX BOLT
	1283	1" LOCK WASHER
	110	1" HEX NUT
17	6075R	LEVELER "L"
	1946	WEAR BUSHING
18	1678	1" x 4 1/2" HEX BOLT
	1283	1" LOCK WASHER
	110	1" HEX NUT
19	6739R	LEVELER CROSS BRACKET
	5934	BUSHING, 5/8" L.
20	6406	3/4" x 3 1/2" HEX BOLT, 1" THD.
	1040	3/4" LOCK WASHER
	106	3/4" HEX NUT
21	6736	STRAIGHT THREAD CONNECTOR, 9/16"-18 M.F. X 3/4"-16 O.R.
22	6737	LOCK VALVE
23	474	3/8" x 2" HEX BOLT
	176	3/8" LOCK WASHER
24	670	5/8" x 2" HEX BOLT
	669-1	5/8" LOCK NUT
25	1823	1/2" x 1 1/4" HEX BOLT

(CONTINUED)

26	486	1/2" FLAT WASHER
27	178	3/8" x 1" HEX BOLT
	176	3/8" LOCK WASHER
28	6159R	INDICATOR CLAMP PLATE
29	6061	1" x 2 1/2" PIN
30	3880	5/16" x 1 3/4" SHOULDER BOLT
	3881	1/4" LOCK NUT
31	6156R	LEFT INDICATOR SCALE
	6922R	RIGHT INDICATOR SCALE
32	6771R	INDICATOR SHAFT
33	6158R	INDICATOR POINTER
34	113	1/2" LOCK WASHER
35	4945	ADJUSTING KNOB
36	6743R	INDICATOR ROD, 29 3/8" L.
	3571	COTTER PIN, 1/8" x 1"
37	6738R	LEVELER HEAD
38	2098-1	GREASE ZERK, 1/8" NPTF, 5/8" L.
39	3565	3/8" x 3 1/2" HEX BOLT
	3567	3/8" LOCK NUT
40	6744R	INDICATOR MOUNT
41	6059R	PIVOT LINK
	5934	BUSHING, 5/8" L.
42	6078R	11/8" L. BUSHING
43	5251	1" x 5 13/16" PIN
	245	1" FLAT WASHER
	3164	5/16" x 2" ROLL PIN
44	245	1" FLAT WASHER
45	3164	5/16" x 2" ROLL PIN
46	6171	1" x 6" PIN
47	6077R	1 3/8" L. BUSHING
48	6067R	LEFT LIFT AXLE LINK
49	6066R	RIGHT LIFT AXLE LINK
50	6076R	LEVELER CROSS, 5"
	2098-1	GREASE ZERK, 1/8" NPTF, 5/8" L.
51	1880	1 1/2" JAM NUT W/SET SCREW
52	2755	FLAT WASHER, 19/16" I.D. x 2 13/16" O.D.
53	6062R	COMPRESSION SPRING, 3" O.D. x 1.625" I.D.
54	6073R	LEVELER SCREW, 43 3/8" L.
	6166R	LEVELER SCREW ASSY., ITEMS 50 - 54
55	1609	COTTER PIN, 3/16" x 1 1/2"
56	6065R	LEVELER SCREW ANCHOR
57	FK150058	5/8" x 2 1/2" HEX BOLT
	669-1	5/8" LOCK NUT
58	4192002	HOSE, 3/8" x 192" LONG, FEMALE ENDS
59	4081002	HOSE, 3/8" x 81" LONG, FEMALE ENDS
60	4032002	HOSE, 3/8" x 32" LONG, FEMALE ENDS
61	4065002	HOSE, 3/8" x 65" LONG, FEMALE ENDS
62	4028002	HOSE, 3/8" x 28" LONG, FEMALE ENDS
63	4024002	HOSE, 3/8" x 24" LONG, FEMALE ENDS



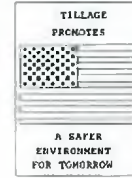
01254

SAFETY AND IDENTIFICATION DECALS

1



2



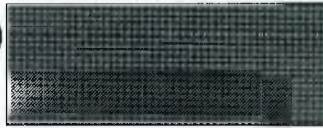
3



4



5



6

SERIAL NUMBER

7

CAUTION

WING FOLD LOCK(S) LATCH AUTOMATICALLY WHEN FOLDED. TO PREVENT MACHINE DAMAGE MANUALLY RELEASE FOLD LOCK(S) BEFORE UNFOLDING.

997395

8

WARNING

MECHANICAL OR HYDRAULIC FAILURE CAN ALLOW MACHINE TO FALL RAPIDLY.

To Prevent Injury or Machine Damage:

- Install transport lock(s) before transporting, adjusting or servicing the machine.
- Remove transport lock(s) before lowering unit.

997396

9

IMPORTANT

REPHASING HYDRAULIC SYSTEM

This unit is equipped with a repowering hydraulic system. The new pump and motor will be applied a charge of air or damage to the lift components may result.

- In pump operation, P.O.D. (power) symbol leads in correct position and ALL lift cylinders are fully recharged.
- Refer to operator's manual for instructions.

997397

10

IMPORTANT

TO INSURE EVEN WORKING DEPTH, THE LIFT WHEELS MUST BE USED TO GAUGE THE DEPTH OF EACH SECTION. TO PREVENT MACHINE DAMAGE DO NOT OPERATE WITH THE TIRES PAVED OFF THE GROUND.

997398

11

DANGER

OVER-HEAD WING HAZARD

MECHANICAL OR HYDRAULIC FAILURE CAN ALLOW WINGS TO FALL RAPIDLY.

To Prevent Serious Injury or Death:

- Stand clear of machine when upper wing folds down or unfolds.
- Avoid others only.

997392

12

CAUTION

To Prevent Injury or Machine Damage:

- Avoid steady operation or maintenance.
- When servicing machine use proper tools and equipment.
- Do not operate or work on this machine without reading and understanding the operator's manual.
- If anyone is to be, contact your distributor dealer for a full manual.

997393

13

IMPORTANT

WING FOLDING / UNFOLDING INSTRUCTIONS

To Prevent Machine Damage:

FOLD AS FOLLOWS:

1. Fold left half of disc first
2. Fold right half of disc UNFOLD AS FOLLOWS:
1. Release both wing locks
2. Fold left wing (To retract center lock cylinders)
3. Unfold right wing first
4. Unfold left wing and extend center lock cylinders

997390

14

WARNING

HYDRAULIC SYSTEM HAZARD

PARTIALLY FULL CYLINDERS AND HOSES CAN ALLOW WINGS TO FALL RAPIDLY.

To Prevent Serious Injury or Death:

- Cylinders and connecting hoses must be fully charged with oil before operating system.

997394

15

WARNING

HIGH-PRESSURE FLUID HAZARD

To Prevent Serious Injury or Death:

- Release pressure on system before repairing, adjusting or disconnecting.
- Use proper tools and eye protection when working on fluid line ends or hydraulic hoses or fittings.
- Avoid all components a year away from original source for a better warranty.

997311

16

42 FT.

SD042

17

REAR DOWN

A

B

C

D

E

F

G

H

REAR UP

997396

18

CAUTION

TOWING HAZARD

To Avoid Injury or Machine Damage:

- Install safety chain when securing to trailer.
- Use a safety chain with breaks strength rated to or greater than the gross weight of the machine.
- Provide only enough slack for turning.

997391

19

1544

20

DEEPER

1 TURN = 1/2"

997317

21

DANGER

ELECTRIFICATION HAZARD

To Prevent Serious Injury or Death:

- Do not use a machine for contact overhead lines.
- Maintain safety clearance with any height of overhead.
- Remove all persons from work in transport height.
- Maintenance may occur without proper contact.

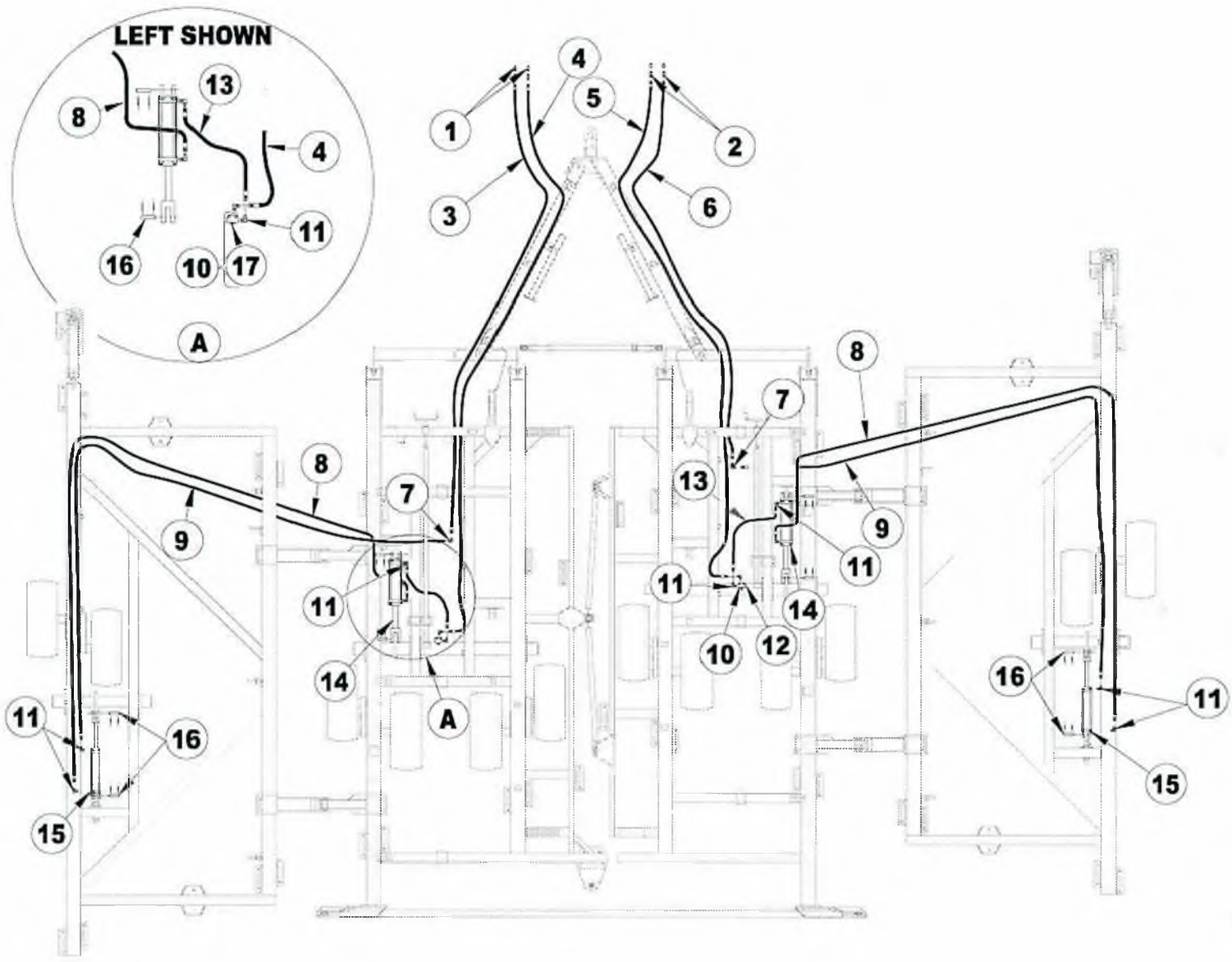
997395

SAFETY AND IDENTIFICATION DECALS

ITEM	PART NO.	DESCRIPTION
1	997002	SUNFLOWER DECAL
	997003	SUNFLOWER DECAL, 1 1/2" HIGH
2	997263	TILLAGE PROMOTES A SAFER ENVIRONMENT FOR TOMORROW
3	997246	FEMA SYMBOL
4	997041	AMBER REFLECTIVE TAPE

SAFETY AND IDENTIFICATION DECALS

ITEM	PART NO.	DESCRIPTION
5	997040	RED REFLECTIVE TAPE
6	N/A	SERIAL NUMBER PLATE
7	997395	CAUTION - WING FOLD LOCK(S) LATCH AUTOMATICALLY
8	997078	WARNING - MECHANICAL OR HYDRAULIC FAILURE CAN ALLOW
9	997052	IMPORTANT - REPHASING HYDRAULIC SYSTEM (LIFT CYLINDER)
10	997314	IMPORTANT - TO INSURE EVEN WORKING DEPTH
11	997042	DANGER - OVERHEAD WING HAZARD
12	997043	CAUTION - AVOID UNSAFE OPERATION OR MAINTENANCE.
13	997390	IMPORTANT - WING FOLDING / UNFOLDING INSTRUCTIONS
14	997309	WARNING - HYDRAULIC SYSTEM HAZARD (FOLD CYLINDER)
15	997311	WARNING - HIGH PRESSURE FLUID HAZARD
16	997112	42' DECAL (SHOWN)
	997115	45' DECAL
17	997316	LEVEL INDICATOR
18	997048	CAUTION - TOWING HAZARD
19	997388	1544 SERIES NUMBER
20	997317	DIRECTIONAL DEPTH INDICATOR
21	997045	DANGER - ELECTROCUTION HAZARD

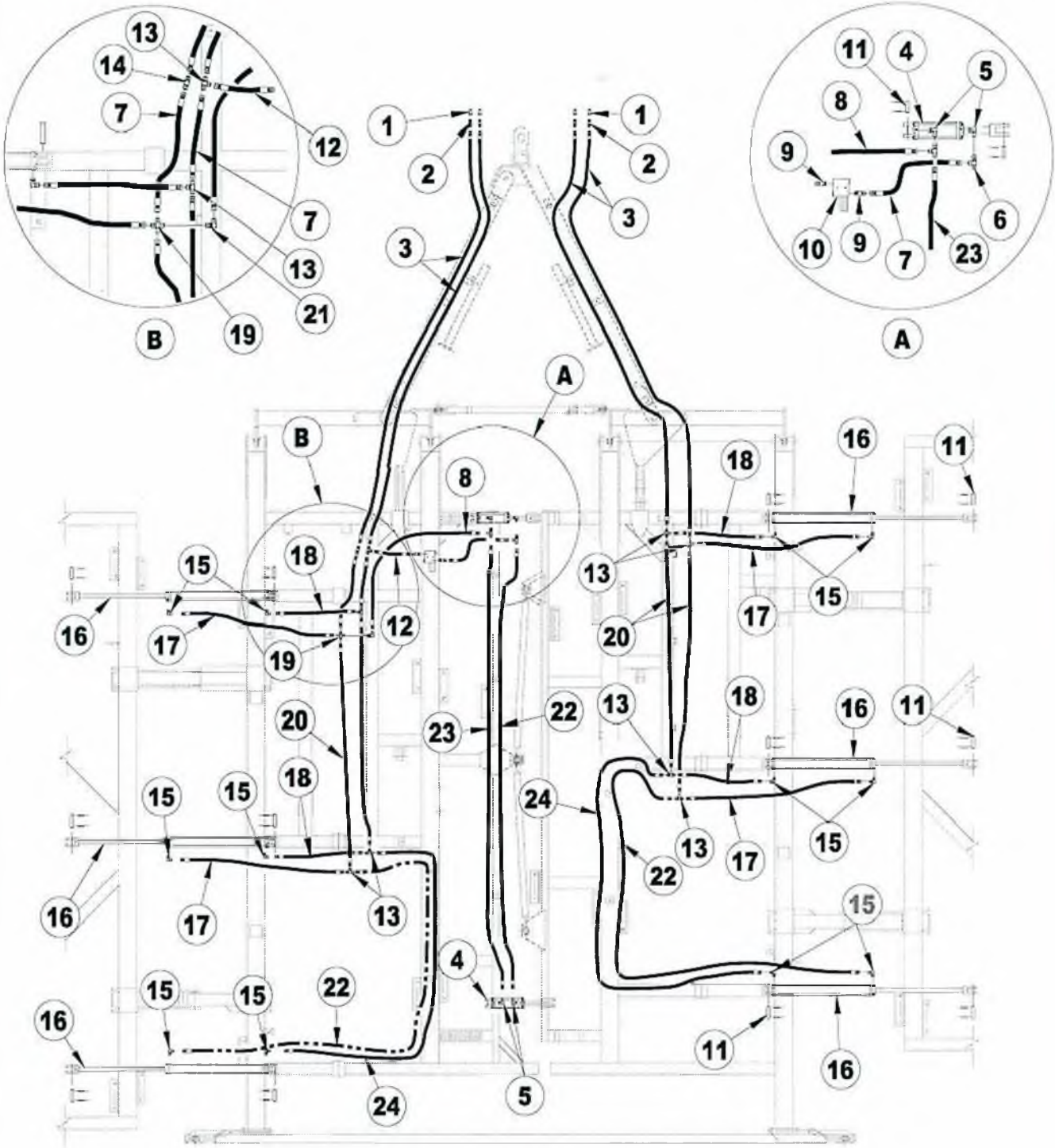


HYDRAULIC LIFT SYSTEM

HYDRAULIC LIFT SYSTEM

ITEM	PART NO.	DESCRIPTION
1	3253	HYDRAULIC COUPLER, MALE HALF
2	2426	MALE CONNECTOR, 7/8"-14 M.F. x 1/2"-14 M.P.T.
3	4232006	HOSE, 1/2" x 232" LONG, MALE TO FEMALE ENDS
4	4290005	HOSE, 1/2" x 290" LONG, FEMALE ENDS
5	4264005	HOSE, 1/2" x 264" LONG, FEMALE ENDS
6	4206006	HOSE, 1/2" x 206" LONG, MALE TO FEMALE ENDS
7	4478	90° SWIVEL ELBOW, 7/8" - 14 M.F. x 7/8"-14 F.F.
8	4315005	HOSE, 1/2" x 315" LONG, FEMALE ENDS
9	4300005	HOSE, 1/2" x 300" LONG, FEMALE ENDS
10	4732	DEPTH CONTROL VALVE ASSEMBLY
11	4457	90° STRAIGHT THREAD ELBOW, 7/8"-14 M.F. x 3/4"-16 O.R.
12	4458	PLUG, 3/4"-16 O.R.
13	4048005	HOSE, 1/2" x 48" LONG, FEMALE ENDS
14	7014R	CYLINDER, 4 1/2" x 16" MASTER W/O STROKE CONTROL (31 1/2" C.P.C.) C.R.
15	4436	CYLINDER, 4 1/4" x 16" SLAVE, W/O STROKE CONTROL (31 1/2" C.P.C.) O.R.B. CROSS
16	5341	1 1/4" x 4 5/16" PIN
	3164	5/16" x 2" ROLL PIN
17	8636-1	CARTRIDGE ASSY.

HYDRAULIC FOLD SYSTEM IS SHOWN WITHOUT THE OPTIONAL HYDRAULIC LEVELER SYSTEM.



01225

HYDRAULIC FOLD SYSTEM

Архангельск (8182)63-90-72
Астана (7172)727-132
Астрахань (8512)99-46-04
Барнаул (3852)73-04-60
Белгород (4722)40-23-64
Брянск (4832)59-03-52
Владивосток (423)249-28-31
Волгоград (844)278-03-48
Вологда (8172)26-41-59
Воронеж (473)204-51-73
Екатеринбург (343)384-55-89

Иваново (4932)77-34-06
Ижевск (3412)26-03-58
Иркутск (395)279-98-46
Казань (843)206-01-48
Калнинград (4012)72-03-81
Калуга (4842)92-23-67
Кемерово (3842)65-04-62
Киров (8332)68-02-04
Краснодар (861)203-40-90
Красноярск (391)204-63-61
Курск (4712)77-13-04
Липецк (4742)52-20-81

Киргизия (996)312-96-26-47

Магнитогорск (3519)55-03-13
Москва (495)268-04-70
Мурманск (8152)59-64-93
Набережные Челны (8552)20-53-41
Нижегний Новгород (831)429-08-12
Новокузнецк (3843)20-46-81
Новосибирск (383)227-86-73
Омск (3812)21-46-40
Орел (4862)44-53-42
Оренбург (3532)37-68-04
Пенза (8412)22-31-16

Казахстан (772)734-952-31

Пермь (342)205-81-47
Ростов-на-Дону (863)308-18-15
Рязань (4912)46-61-64
Самара (846)206-03-16
Санкт-Петербург (812)309-46-40
Саратов (845)249-38-78
Севастополь (8692)22-31-93
Симферополь (3652)67-13-56
Смоленск (4812)29-41-54
Сочи (862)225-72-31
Ставрополь (8652)20-65-13

Таджикистан (992)427-82-92-69

Сургут (3462)77-98-35
Тверь (4822)63-31-35
Томск (3822)98-41-53
Тула (4872)74-02-29
Тюмень (3452)66-21-18
Ульяновск (8422)24-23-59
Уфа (347)229-48-12
Хабаровск (4212)92-98-04
Челябинск (351)202-03-61
Черновец (8202)49-02-64
Ярославль (4852)69-52-93

<http://sunflower.nt-rt.ru> || srw@nt-rt.ru